



# PRISM

Public Risk Innovation,  
Solutions, and Management

# 2024 - 2025 ANNUAL REPORT

# FUTURE FOCUSED





**PRISM**



# TABLE OF CONTENTS



## **Introduction**

PRESIDENT'S MESSAGE 1

YEAR IN REVIEW 2

## **About PRISM**

MISSION & VISION 3

SERVICES & RESOURCES 4

MEMBERSHIP & INVOLVEMENT 5

PRISM AFFILIATE RISK CAPTIVE 6

## **Coverage Programs**

MAJOR PROGRAMS 7

MISCELLANEOUS PROGRAMS 8

PRIMARY WORKERS' COMPENSATION 9

EXCESS WORKERS' COMPENSATION 11

GENERAL LIABILITY 1 13

GENERAL LIABILITY 2 15

## **Coverage Programs (Cont.)**

PROPERTY 17

MEDICAL MALPRACTICE 19

MASTER ROLLING OWNER

CONTROLLED INSURANCE PROGRAM 21

PRISMHEALTH 22

DENTAL 23

## **Financials**

AWARDS & ACCOMPLISHMENTS 24

FINANCIAL LETTER 25

FINANCIAL PROFILE 31

## **Governance**

PAST PRESIDENTS 36

2025 EXECUTIVE COMMITTEE 36

2026 EXECUTIVE COMMITTEE 36



# PRESIDENT'S MESSAGE

An introduction by Karen Caoile  
Contra Costa County | PRISM President



In 2025 PRISM has weathered unprecedented and escalating risks from climate change, unstable market conditions, and “social inflation”. Undaunted, PRISM continues to lead the insurance pool pack when it comes to being **future focused** – always forward thinking, strategically planning, and not only embracing change, but being change leaders.

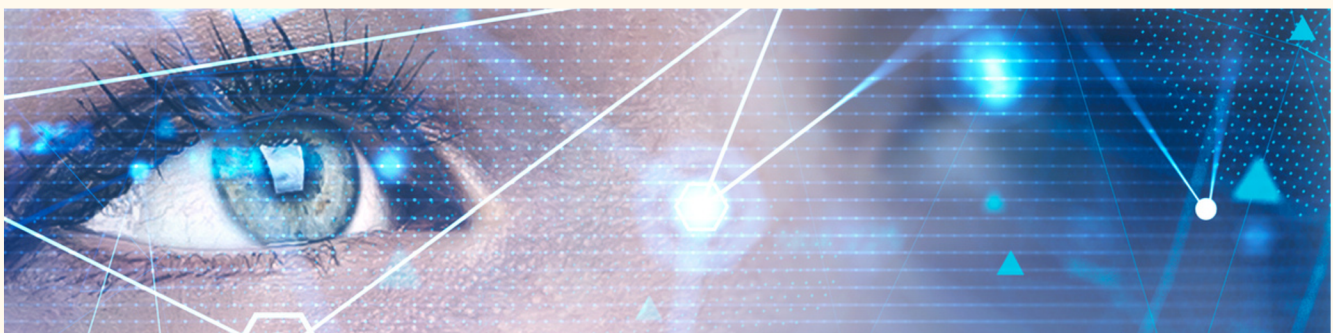
The rising climate risk and catastrophic weather events directly impacted PRISM in 2025. A big challenge PRISM worked through was the significant property loss arising out of the Eaton Fire in Southern California, which is the largest loss PRISM has experienced in the Property Program’s history.

PRISM and Alliant capped off a successful renewal of all our programs despite the challenging insurance marketplace. Because of our long-standing relationships with reinsurers, despite the large Eaton Fire loss, PRISM was able to renew the Property Program with increased limits and stable pricing. This illustrates the value of relationships built over time, and the value of pooling.

Looking ahead to 2026, a few big projects include the membership’s decisions regarding amendments to PRISM’s governance structure, determining PRISM’s role in legislative tort reform efforts, and figuring out ways to integrate Artificial Intelligence (AI) into various aspects of the work of PRISM. I know PRISM is up to the task and will continue its legacy of being a leader in the insurance pool industry.

Thank you for allowing me to serve as President in 2025. It has been an honor to work with PRISM staff, members, program partners, and the Alliant team. All a cadre of amazing people that make up the phenomenon that is PRISM. I have enjoyed the privilege and opportunity to be a part of this member-directed organization as a “driven member” through my participation in the organization’s strategic planning sessions, and by serving on various committees, ad hoc and sub-committees, the Executive Committee, and the Board of Directors. The experience has made work fuller and more meaningful. I encourage you to be a “driven member” as well.

*Karen Caoile*



# YEAR IN REVIEW

*“TO KNOW WHERE WE ARE GOING, WE MUST UNDERSTAND WHERE WE HAVE BEEN.”*

The accomplishments of PRISM over the past year are many, even in light of the continuing hard market that has persisted over the industry. By planning strategically and being nimble to address change, we have been able to meet the present challenges. PRISM has created and curated resources and programs to mitigate risks and achieve the best possible solutions.

Over this past year, PRISM has achieved significant accomplishments, such as:

**Retained 99% of members at renewal of the programs**

**Made payments of \$379M in claims in pooled layers for its various programs in 2024/25**

**Launched the workers' compensation instance of Spectra, our proprietary claims system**

**Utilized PRISM ARC, a single-parent captive insurance company, to transfer risk from various programs and achieve higher investment income returns and provide coverage to 10 out of state participants**

**A PRISM Task Force made plans to create a JPA to provide a First Party Claims Administrator**

**A PRISM Task Force worked with Rural County Representatives of California (RCRC) and has formed five regional working groups to consider how best to provide jail medical services**

**The PRISMHealth Program approved withdrawal from their risk sharing arrangement with SISC, to become a stand-alone healthcare purchasing pool**

**Launched a First Responder Peer Support Service program**

**PRISMHealth implemented a dynamic chronic-condition weight management program that will increase care and contain costs**

**Provided on-demand instructor led education to over 1,400 people**

**The Vision Program exited a fully insured funding model and entered into a self-funded arrangement with VSP**

**The Primary Workers' Compensation Program (PWC) declared a \$9.5M dividend**



# MISSION & VISION

## MISSION STATEMENT

*PRISM is a member-directed risk sharing pool of public agencies committed to providing risk coverage programs and risk management services, which drive member stability, efficiency, and best practices.*

## VISION STATEMENT

*PRISM will continue to be internationally recognized as a leading risk sharing pool for its member-directed operating philosophy and commitment to member fiscal sustainability. PRISM will continue to influence and shape the future of the risk management profession.*

## CORE VALUES

C

**Competitive**  
in scope and price over long term

A

**Adaptable**  
and customized to meet member needs, based on high-quality standards

R

**Resolute**  
in delivering timely solutions that address present and emerging risks

E

**Equitable**  
in allocating costs and services between various members in a fair and consistent manner

S

**Stable**  
in supporting cost-effective, fiscally prudent operations and long-term solvency, and in building long-term relationships with members and program/service partners



### PRISM SENIOR LEADERSHIP

**From left to right:** Heather Fregeau (Chief Claims Officer - Liability & Property), Rick Brush (Chief Member Services Officer), Gina Dean (Chief Executive Officer), Mike Pott (Chief Operating Officer/Chief Legal Counsel), Jen Hamelin (Chief Claims Officer - Workers' Compensation), Tom Pelster (Chief Information Officer), Juemin Zhang (Chief Actuary)

**Not pictured:** Puneet Behl (Chief Financial Officer)

### CHIEF EXECUTIVE OFFICERS

Gina Dean | 2020 - present  
Michael Fleming | 1992 - 2020  
Vincent W. Pisani | 1985 - 1992  
Gregory L. Trout | 1980 - 1985

### CHIEF LEGAL COUNSEL

Mike Pott | 2019 - present

# SERVICES & RESOURCES

PRISM Member Services include Risk Control, Risk Management, and Claim Services. Claim trends, emerging risks and member input are contemplated by the Member Services Committee, who drive our training/education, services and program curriculum. Our services span nearly all areas of risk, including workers' compensation, property, liability, health and cyber. There are resources offered broadly, assisting all member types, as well as targeted services assisting first responders and educational institutions. We offer everything from consultation and specialized courses to in-depth manuals and a toolbox with hundreds of sample policies, procedures and templates. We have 40+ negotiated master service agreements, curated best practices on recent topics, and our offerings continue to grow. Services and resources are designed to help all members manage their risk exposures.



PRISM members currently enjoy the benefits of the following services and resources:

**LEGAL CONSULTATION & ADVICE**



**INSURANCE REQUIREMENTS IN CONTRACTS MANUAL**



**MULTIPLE MASTER SERVICE AGREEMENTS**



**RISK CONTROL & MANAGEMENT CONSULTATION/RESOURCES**



**CRISIS INCIDENT MANAGEMENT & COUNSELING SERVICES**



**CLAIMS RESOURCES**



**STRATEGIC PLANNING FACILITATION**



**ENTERPRISE RISK CONSULTANTS PROGRAM**



**MEDICAL PROVIDER NETWORK**



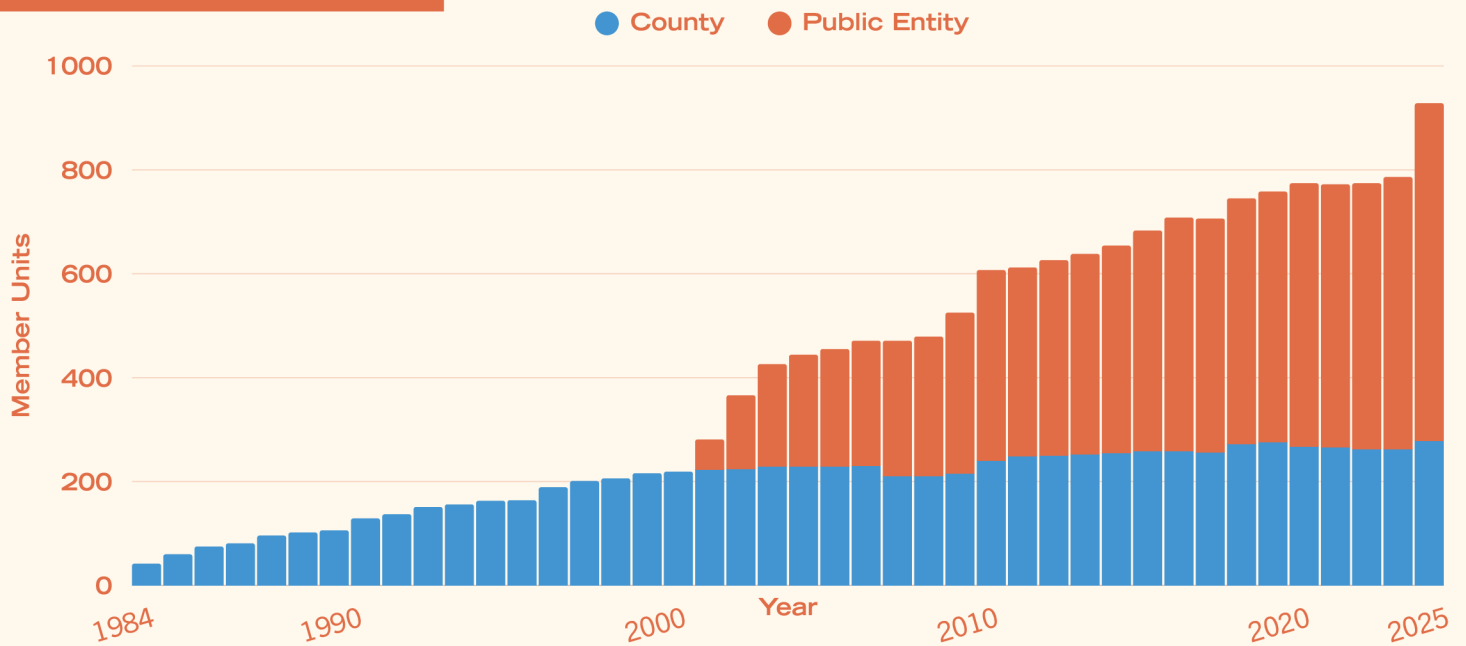
**EMPLOYMENT PRACTICES CONSULTATION & WEBINARS**





# MEMBERSHIP & INVOLVEMENT

## MEMBER UNITS



As depicted above, PRISM membership is shown in terms of “member units,” where each member in each of the major programs is counted as one member unit. We are proud to report that 649 public entity units and 279 county units directly participate in our major programs.

All in all, 1,740 public entities access the coverage and services of PRISM, either directly or through a member JPA. At a time when the markets are hardening, being part of a risk sharing pool gives all PRISM members the ability to take advantage of our collective economies of scale to purchase high quality, low-cost coverage programs.

# PRISM AFFILIATE RISK CAPTIVE (ARC)



01

## Short-Term Benefits

There is a short-term, immediate benefit to each program and its members that transfers risk into the captive. The cost to fund each corridor is discounted by 3-10%, depending on the duration of the payout period of the program, which represents an upfront savings to the program members.

02

## Long-Term Benefits

There is also a long-term benefit to the entire PRISM membership across all programs. This is derived from an enhanced investment program that has returned millions of dollars in additional investment income.

03

## Stability Through Diversification

A superior risk transfer mechanism is created in the captive by commingling the risks of different programs. When the risks are commingled, the nature of the risk changes, creating a diversified, blended risk that is inherently more stable.

## ARC BOARD OF DIRECTORS

Gina Dean, President

Scott Schimke, Vice President

Barbara Lubben, Treasurer

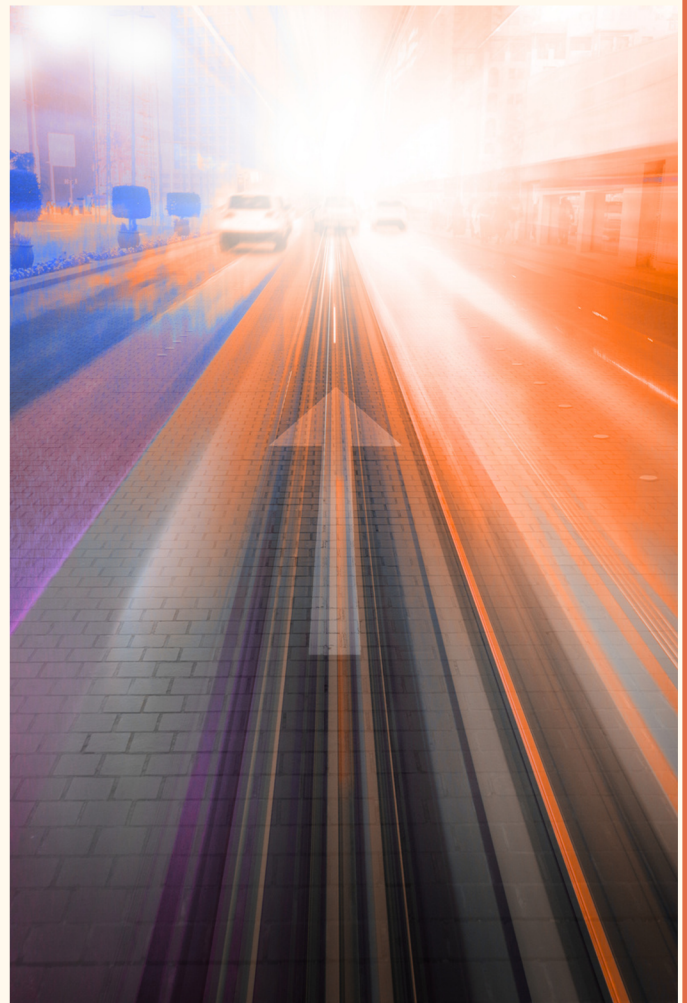
Brent Andrewsen, Secretary

Janell Crane, Board Member

Mike Pott, Board Member

Michael Fleming, Board Member

Pat Cabulagan, Board Member





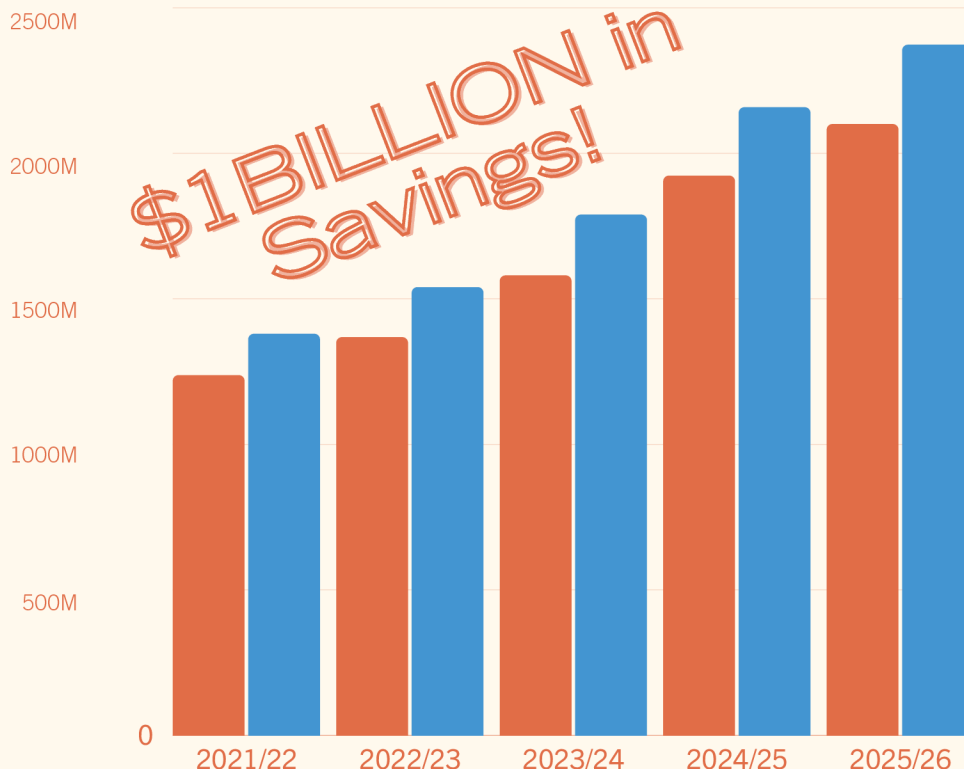
# MAJOR PROGRAMS

PRISM’s nine major coverage programs are flexible with a blend of pooled risk levels and purchased insurance. Members of these programs pool together their risk, ensuring structural integrity for the long-term.

PRISM leverages economies of scale using the membership’s purchasing power to secure more cost-effective coverages, especially during hard market conditions, where insurance rates rise above the cost to actuarially fund the group’s exposures, resulting in the self-funded pools expanding and decreasing the amount of insurance purchased.

Annually, PRISM compares the cost of its major programs to the estimated cost members would pay if they were purchasing similar coverage on their own, instead of as part of the group. The bar chart (below) compares the premium paid by PRISM members versus what they would likely have paid on their own. In the past five years, PRISM has saved members over \$1 Billion!

5 YEAR PREMIUM VS. ESTIMATED STAND-ALONE COST (IN MILLIONS OF \$) ● Net Premium ● Stand Alone



## What’s Covered?

7

Property & Casualty (P&C) Programs

2

Employee Benefits (EB) Programs

**\$2.7B**

Premium Volume

**\$73B**

Payroll

**672k**

Daily Attendance

**\$107B**

Total Insured Values

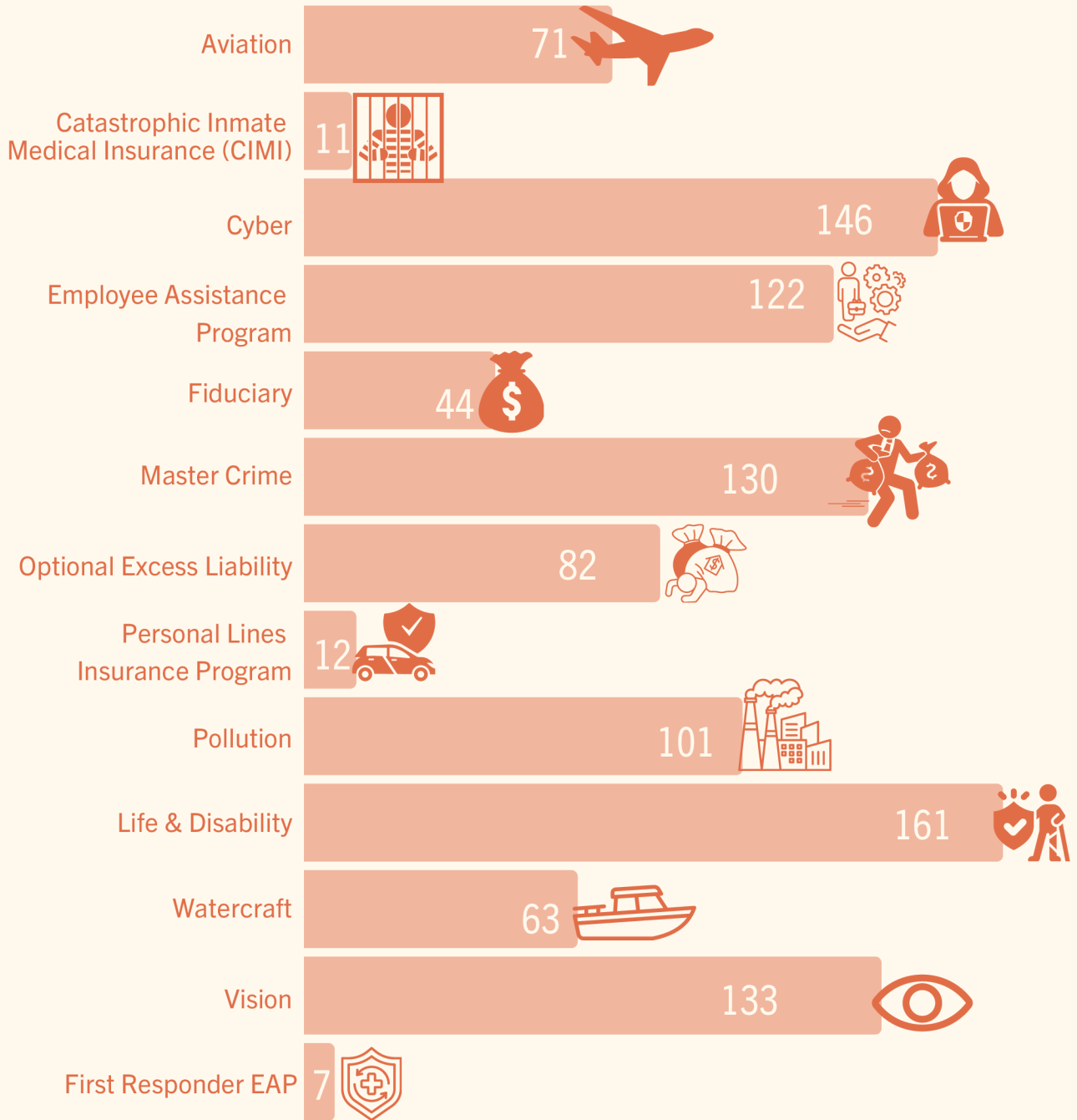
**150k**

Employee Lives

# MISCELLANEOUS

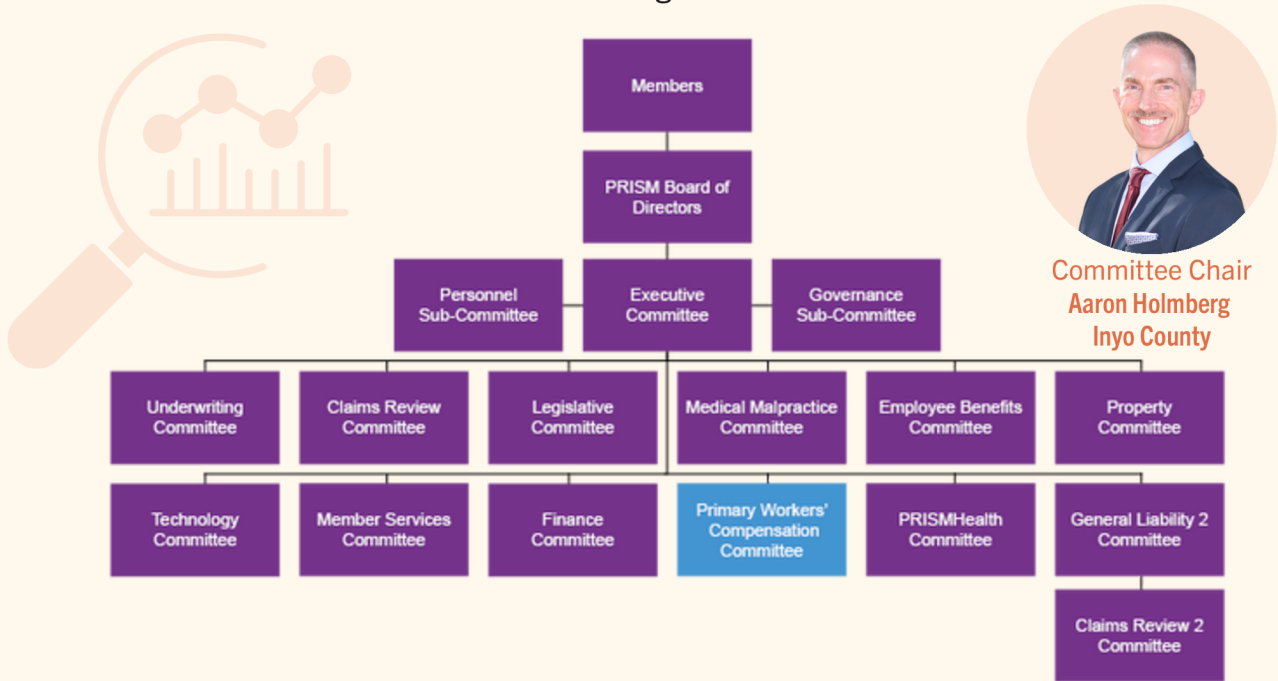
While our major programs address most of our members' coverage needs, PRISM provides a wide variety of group-purchase insurance programs to offer protection from other exposures, including: Aviation, Crime, Optional Excess Liability, Pollution, and many others.

Illustrated below is the member participation in these group-purchased programs for the 2024/25 year.



# PRIMARY WORKERS' COMPENSATION

The Primary Workers' Compensation (PWC) Committee governs the PWC Program, overseeing funding, coverage issues, claims administration, new member applications, and coverage renewals.



## ABOUT THE PROGRAM

The Primary Workers' Compensation Program empowers members with first-dollar coverage, offering stability in place of an individual self-insured retention. Members can select from four contracted TPAs and access PRISM's vendor partners for enhanced employee support and cost containment services. Backed by PRISM's workers' compensation team, the Program ensures proactive oversight, improved claims outcomes, and consistent member value.

## STRUCTURE

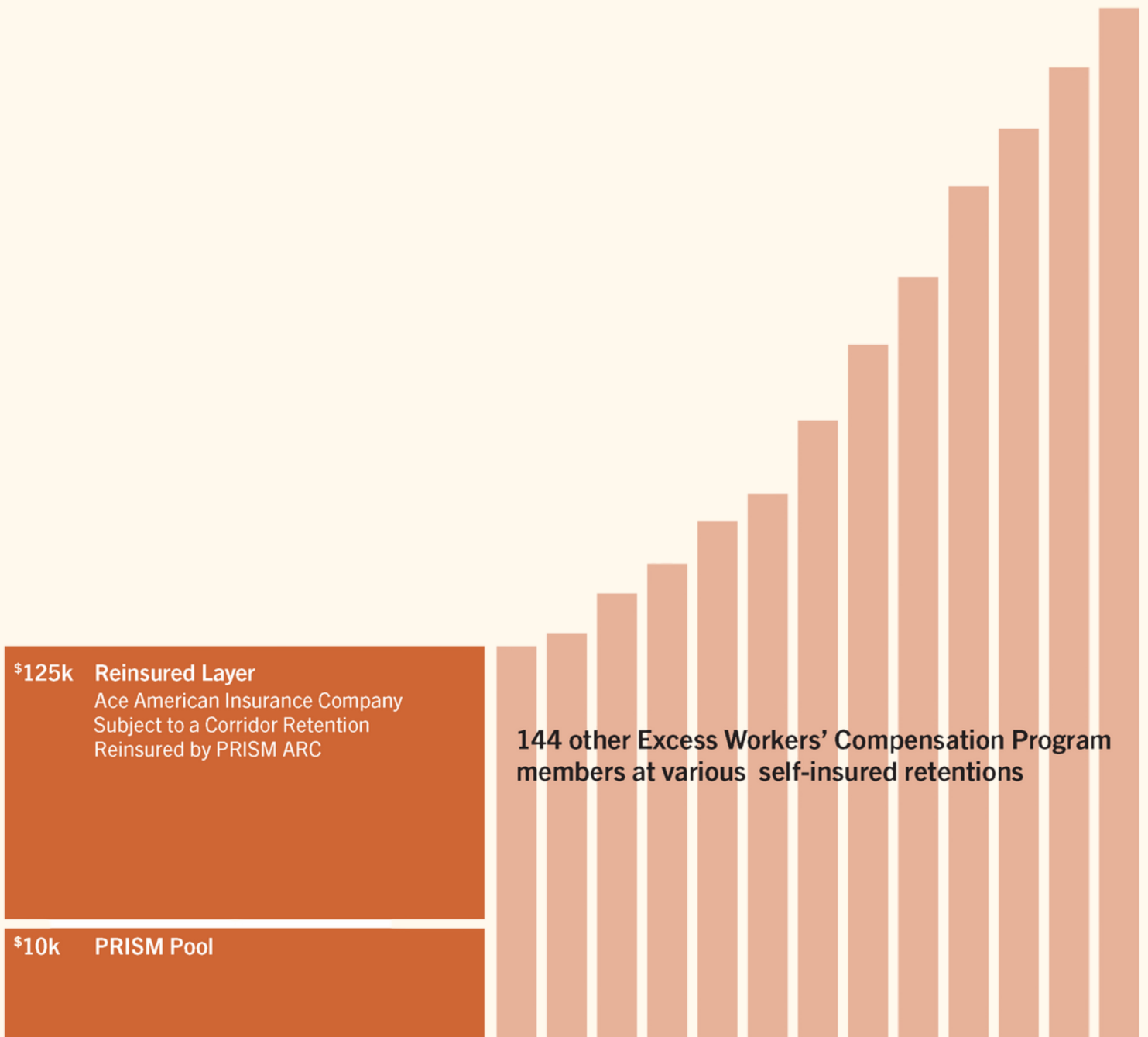
The Program structure blends pooling and reinsurance, covering the first \$10k of losses and strategically leveraging reinsurance for the \$10k–\$125k layer. This conservative yet forward-looking approach has allowed the Program to maintain strong financial health, declaring a \$9.5M dividend for the 24/25 fiscal year, and more than \$80M in dividends over 18 years.

## COST CONTAINMENT

- Injury Reporting and Triage Services
- Pharmacy Benefit Management Program
- Proprietary Medical Provider Network
- Return to Work Program
- TPA Contracts & Fees
- Managed Care Contracts & Fees
- Office of Self-Insurance Plans (OSIP) Assessments
- Crisis Incident Management
- Risk and Legal Consultation/Advice
- In-house Labor Law/Employment Practice Services
- Claims Indexing
- PRISM's staff, services and partners

# PROGRAM STRUCTURE

Statutory ——— Excess Workers' Compensation Program ———

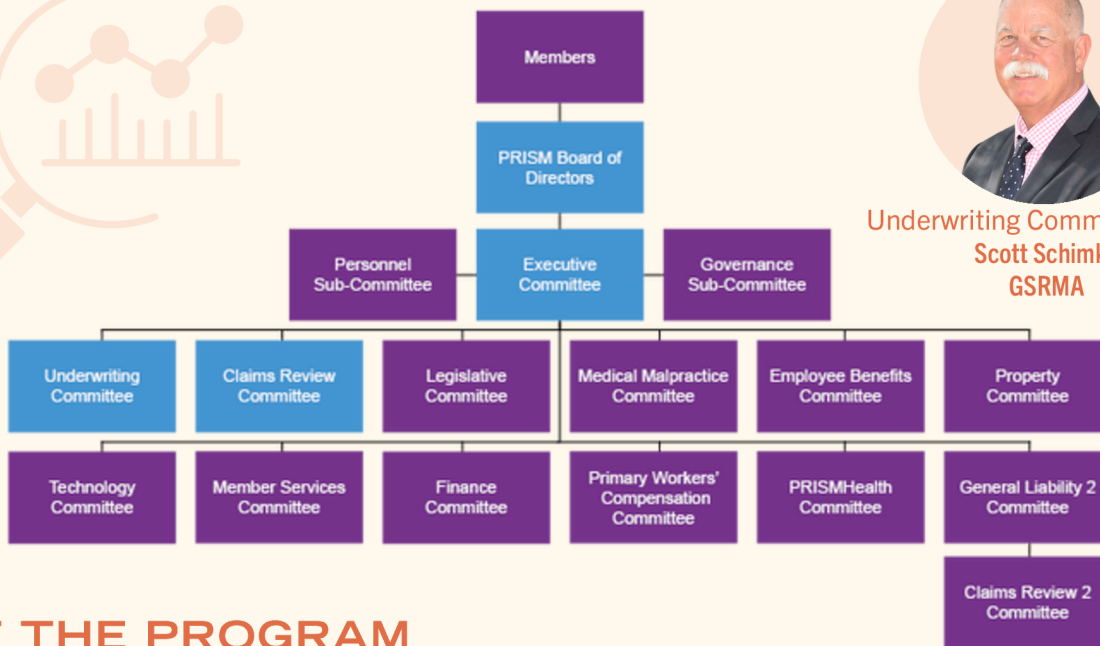


# EXCESS WORKERS' COMPENSATION

The Board of Directors governs the Excess Workers' Compensation (EWC) Program, guided by recommendations from the Executive, Underwriting, and Claims Review Committees. Specific authority for daily operations has been delegated to the Claims Review and Underwriting Committees.



Underwriting Committee Chair  
**Scott Schimke**  
GSRMA



## ABOUT THE PROGRAM

The Excess Workers' Compensation Program provides members with stability and competitive coverage for claims exceeding their individual self-insured retention. As part of the program, members self-manage their workers' compensation programs and losses. In doing so, members are adhering to PRISM's Claims Administration Standards either through self-administration or through a contracted TPA which provides industry best practice claims handling practices that enhance the pooling mentality to ensure all are managing their losses consistently.

## STRUCTURE

The Program continues to demonstrate its strength by pooling the first \$5M of losses above the member's SIR, while strategically leveraging reinsurance with trusted reinsurer partners for statutory benefits in excess of \$5M. The breadth of the EWC program membership allows for unique structures to meet the needs of the diversity of the membership by carving out the education members from local government members to capture the distinct exposures while providing a fair and equitable solution to excess workers' compensation coverage.

## COST CONTAINMENT

- Crisis Incident Management
- Risk and Legal Consultation/Advice
- In-house Labor Law/Employment Practice Services
- Claims Indexing
- PRISM's staff, services and partners
- Access to partners contracted through the PWC Program

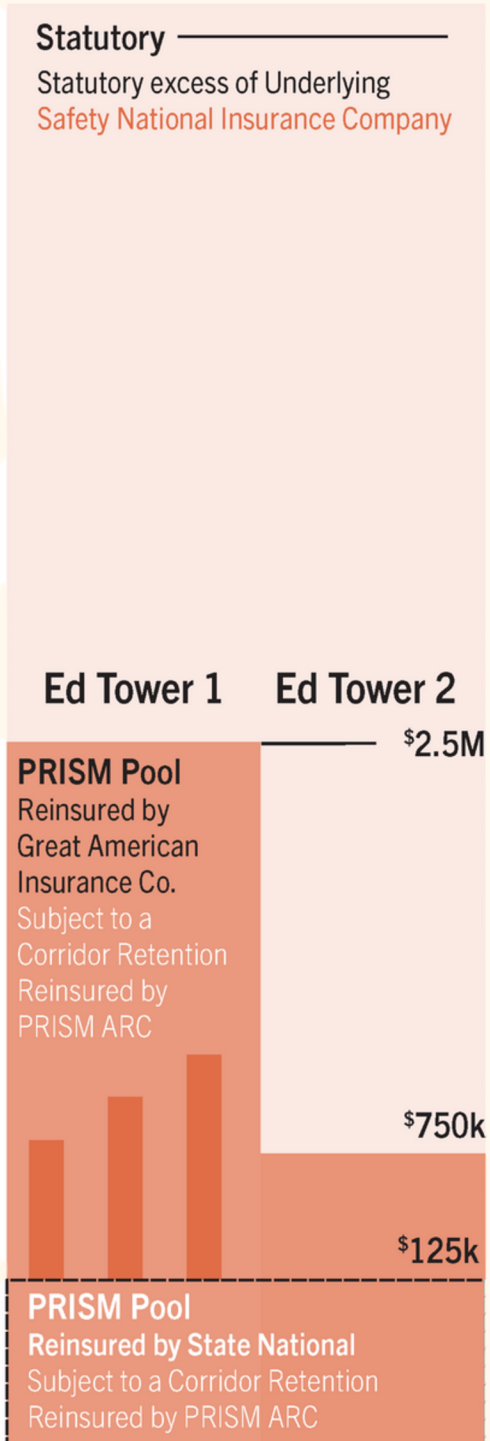
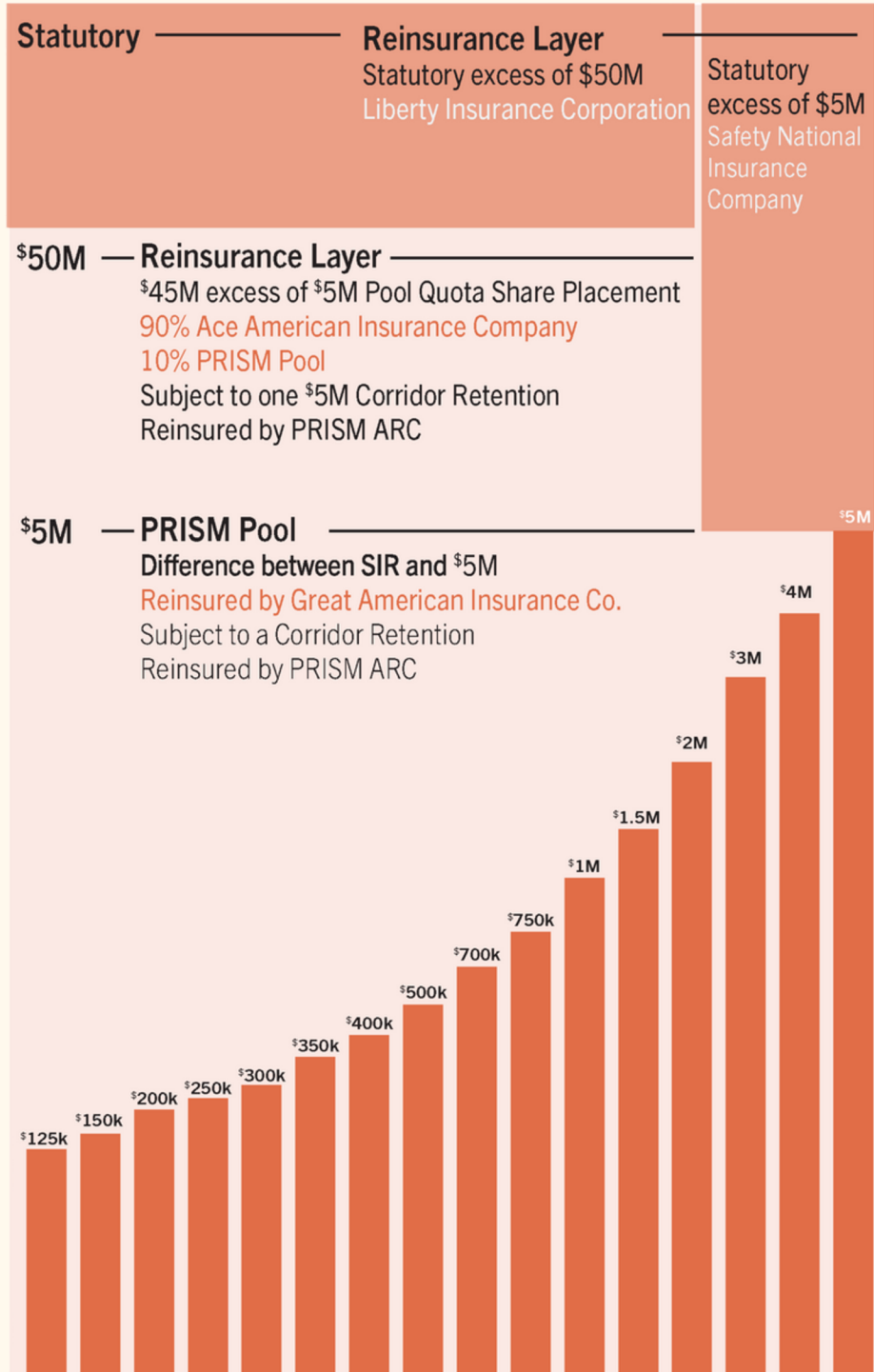
# PROGRAM STRUCTURE

## Core Tower

## Educational Tower

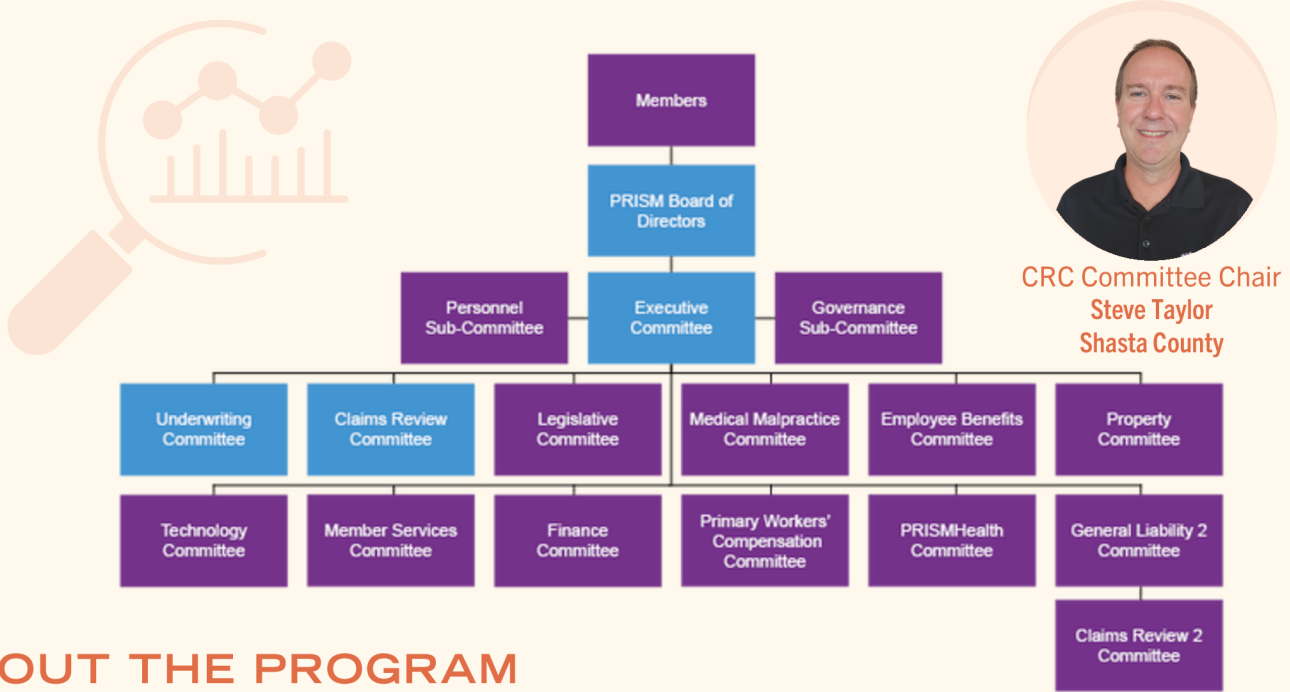
### Tower I

### Tower II



# GENERAL LIABILITY 1

The General Liability 1 Program (GL1), like the EWC Program, is governed by the Board of Directors, with guidance from the Executive, Underwriting, and Claims Review Committees. Day-to-day authority is delegated to the Underwriting and Claims Review Committees. The Claims Review Committee manages GL1 and EWC claims, with full authority over settlements and claims services, including cost-containment and audit services.



## ABOUT THE PROGRAM

The General Liability 1 Program continues to deliver reliable and effective third-party liability coverage to its members, reinforcing its value year after year. PRISM is energized by the Program’s growth, welcoming new members who strengthen the collective. Despite ongoing challenges in the insurance market, the trusted and long-standing relationships PRISM has built with market partners ensured a successful renewal and a strong position for the year ahead.

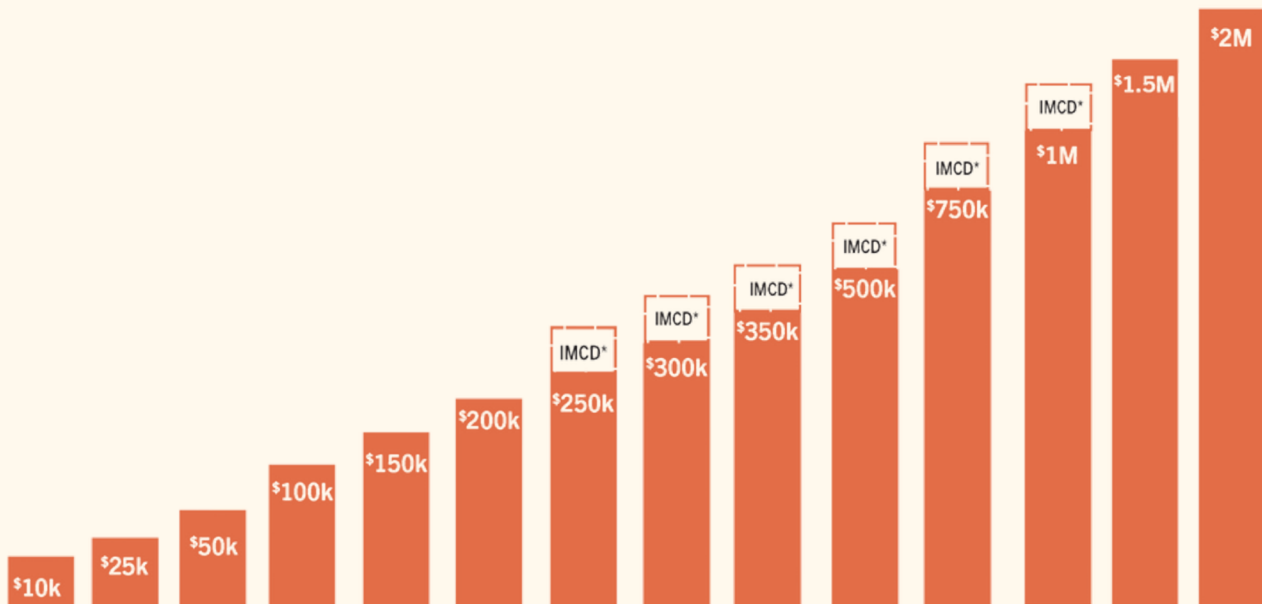
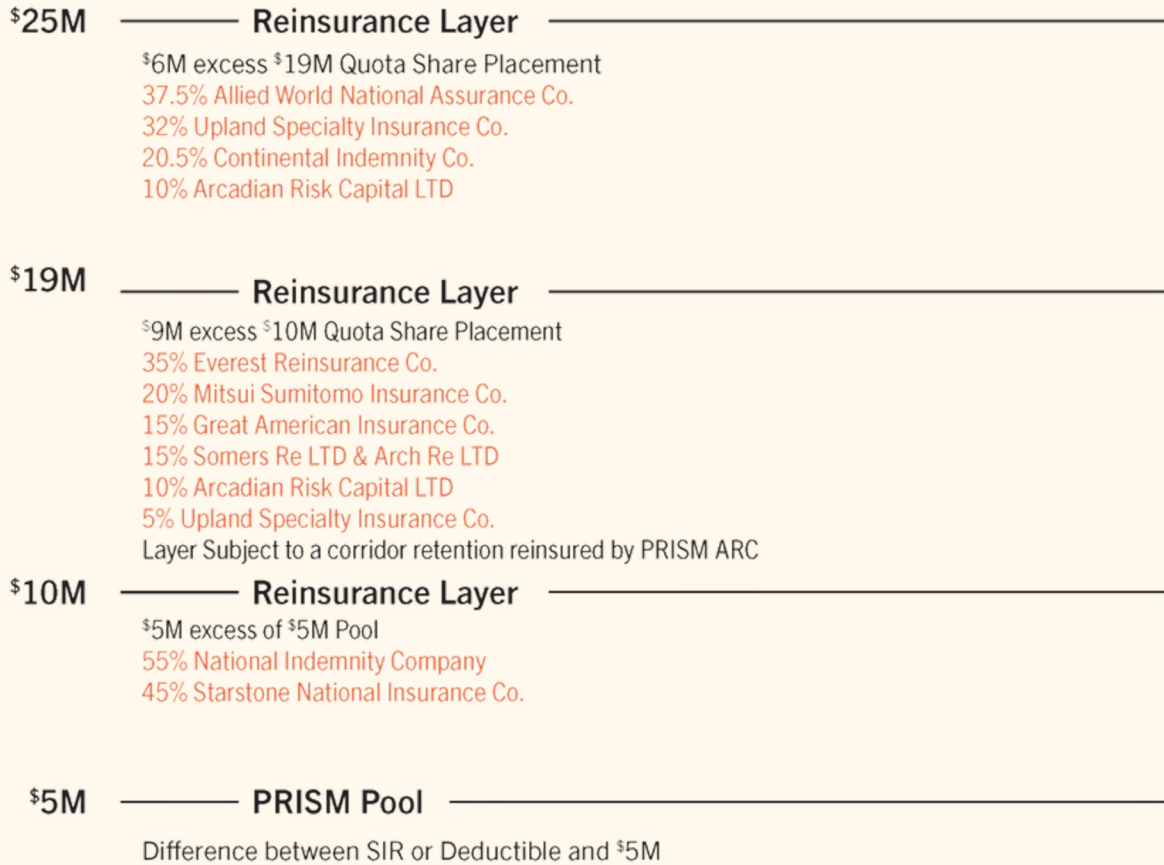
## STRUCTURE

The Program continues to demonstrate its strength by pooling the first \$5M of losses while strategically leveraging a multi-layer reinsurance structure with trusted reinsurer partners. As the deductible buy-down option phases out, participating members will transition seamlessly into the GL1 Program, ensuring continuity and the same exceptional PRISM service they have always relied on. Throughout this evolution, PRISM staff remain committed to delivering outstanding support and guidance, making the transition smooth while keeping members’ needs front and center.

## COST CONTAINMENT

- Crisis Incident Management Services
- Risk and Legal Consultation/Advice
- In-house Labor Law/Employment Practice Services
- Claims Indexing

# PROGRAM STRUCTURE



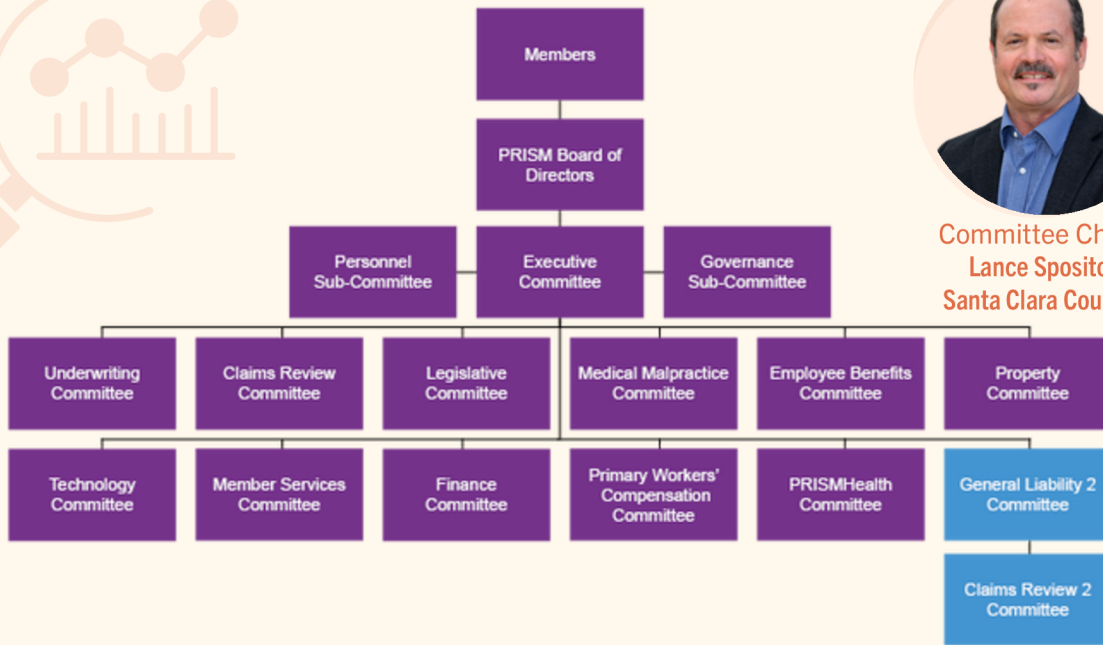
- \* Individual Member Corridor Deductible (IMCD) where applicable.
- 62 GL1 Program members purchase additional limits through the Optional Excess Liability Program
- 23 GL1 Program members participate in the Deductible Buy-Down Option at a \$10k deductible

# GENERAL LIABILITY 2

The General Liability 2 (GL2) Committee and Claims Review Committee 2 (CRC2) govern the General Liability 2 Program, overseeing insurance placements, coverage issues, claims administration, program services, and new member applications.



Committee Chair  
Lance Sposito  
Santa Clara County



## ABOUT THE PROGRAM

The joint purchase option available to GL2 Program members continues to thrive, enabling members to secure robust excess and reinsurance coverage while honoring their long-standing commitment to self-managing and funding their primary losses. At the same time, the Program’s bench strength continues to grow with the addition of new members, further reinforcing stability, resilience, and collective success.

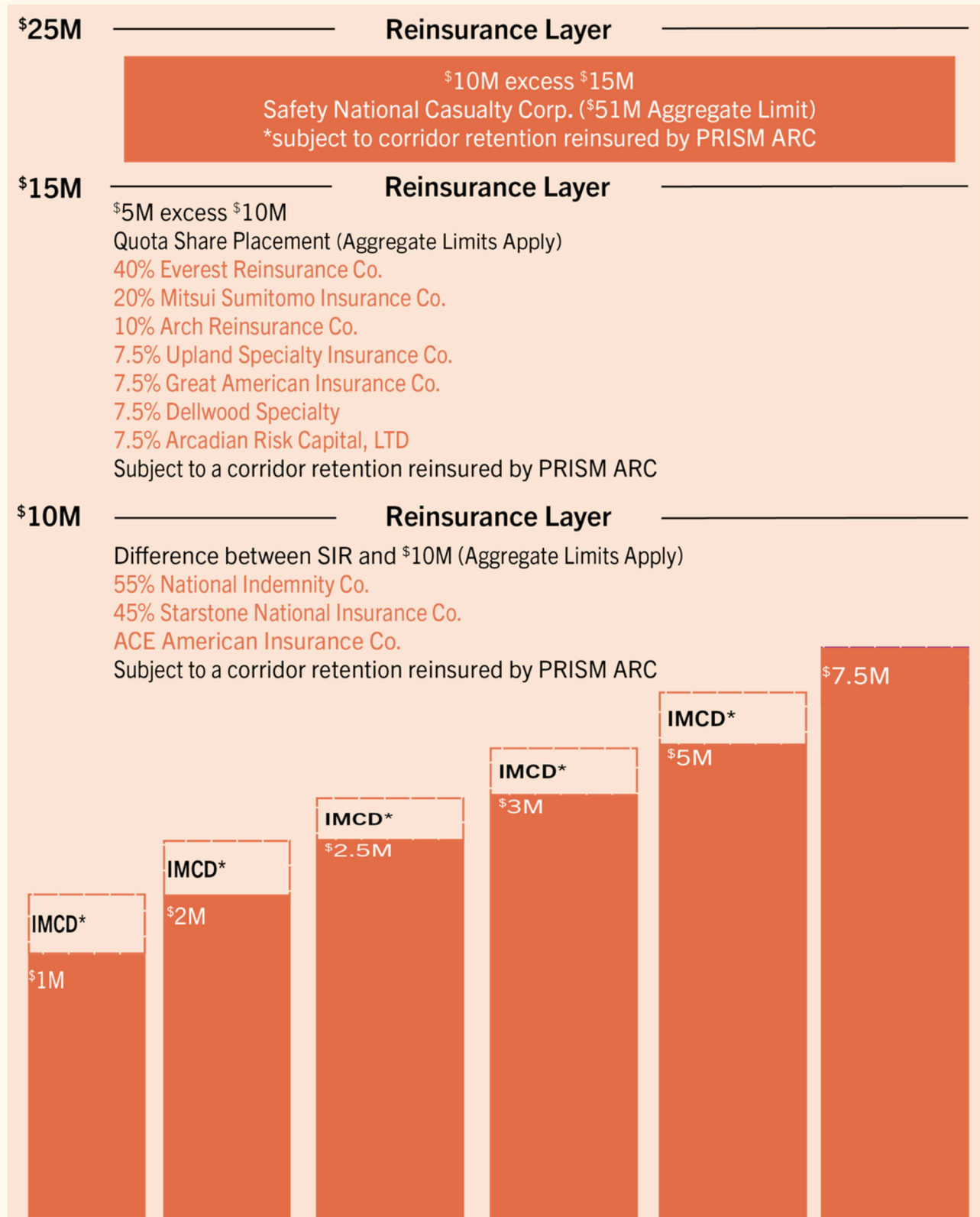
## STRUCTURE

Through trusted relationships with the reinsurance and excess markets, the Program continues to hold strong . Despite navigating a challenging market environment, these partnerships delivered a successful renewal—achieving increased aggregate limits and welcoming a new reinsurance carrier into the Program. This milestone reflects both the credibility of the program and its commitment to securing lasting value for its members.

## COST CONTAINMENT

- Crisis Incident Management Services
- Risk and Legal Consultation/Advice
- In-house Labor Law/Employment Practice Services
- Claims Indexing

# PROGRAM STRUCTURE

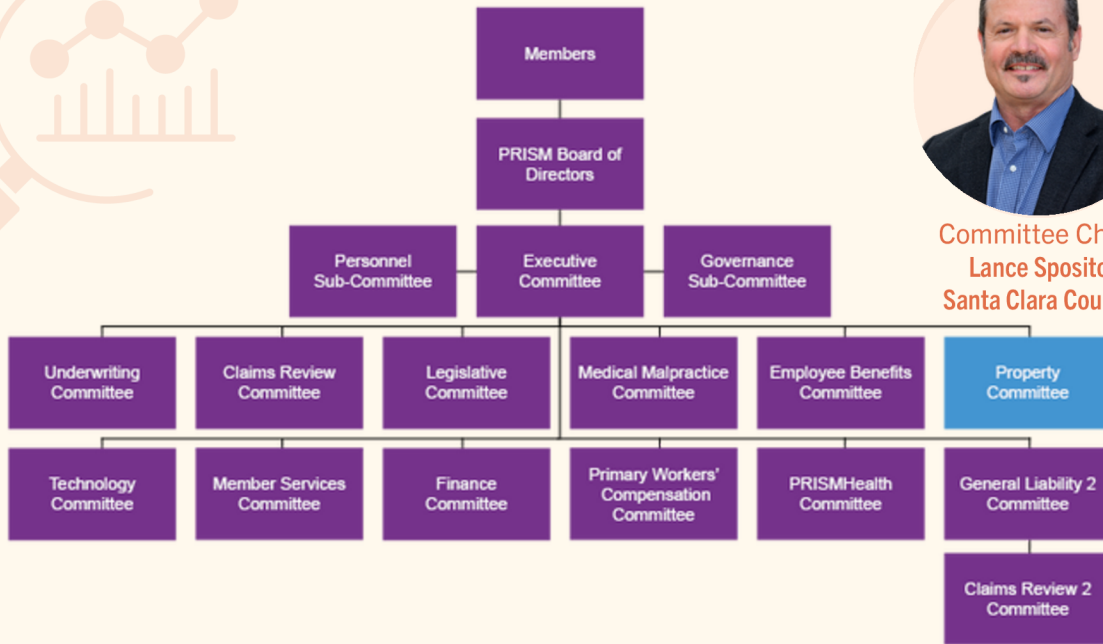


\* Individual Member Corridor Deductible (IMCD) where applicable.

•20 GL2 Program members purchase additional limits through the Optional Excess Liability Program.

# PROPERTY

The Property Committee governs the Program, overseeing insurance placements, coverage issues, property appraisals, other Program services, and new member applications.



Committee Chair  
Lance Sposito  
Santa Clara County

## ABOUT THE PROGRAM

One of PRISM's most popular programs, the Property Program's stability is grounded in long-standing relationships with insurers and underwriters, strong membership volume, and consistent program success. These factors also contribute to the program's consistent development of creative solutions in solving the difficult problems associated with property coverages.

## STRUCTURE

The Property Program continues to self-insure the primary \$10M per occurrence/tower, with aggregate stop-loss coverage to limit exposure for unlimited claims in that layer. The Program also provides broad coverage, including flood and earthquake. The Program's complex towers structure creates a demographic spread of risk throughout the State.

## COST CONTAINMENT

- Risk Control Grant Program
- Pressure vessel inspections
- Appraisal services

# PROGRAM STRUCTURE



\* \$400MXS\$700-All Risk Only for San Bernardino County Arrowhead Regional Medical Center  
 \*\* PRISM Primary participation is \$10M/tower, per occurrence All Risk and \$10M/tower, per occurrence/annual aggregate for EQ and Flood.  
 \*\*\* Aggregate losses exceeding \$185M would be PRISM responsibility

EQ Rooftop  
 \$380M  
 Aggregate  
 xs  
 \$100M  
 Towers I-VI

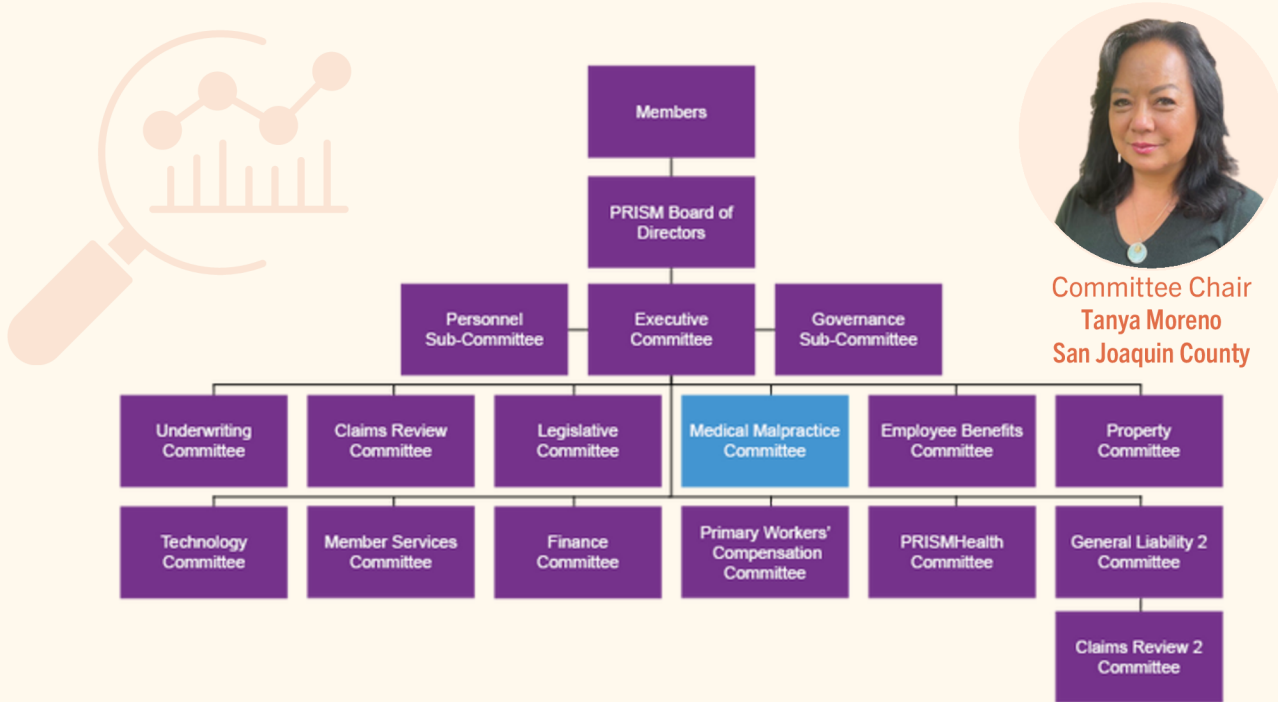
**LEGEND**

EQ  All Risk  Flood

Not shown graphically is the Catastrophic Risk pool, designed to buy-down member deductibles for Flood and Earthquake.

# MEDICAL MALPRACTICE

The Medical Malpractice Committee governs the Program, overseeing pool funding, coverage issues, claims, program services, new member applications, and reinsurance placements.



## ABOUT THE PROGRAM

The Program continues to expand with the addition of new members while maintaining seamless continuity of coverage for medical professional services and limited general liability exposures. By protecting established healthcare facilities and jails with dependable, tailored coverage, the Program reinforces its commitment to growth, stability, and the long-term security of its members.

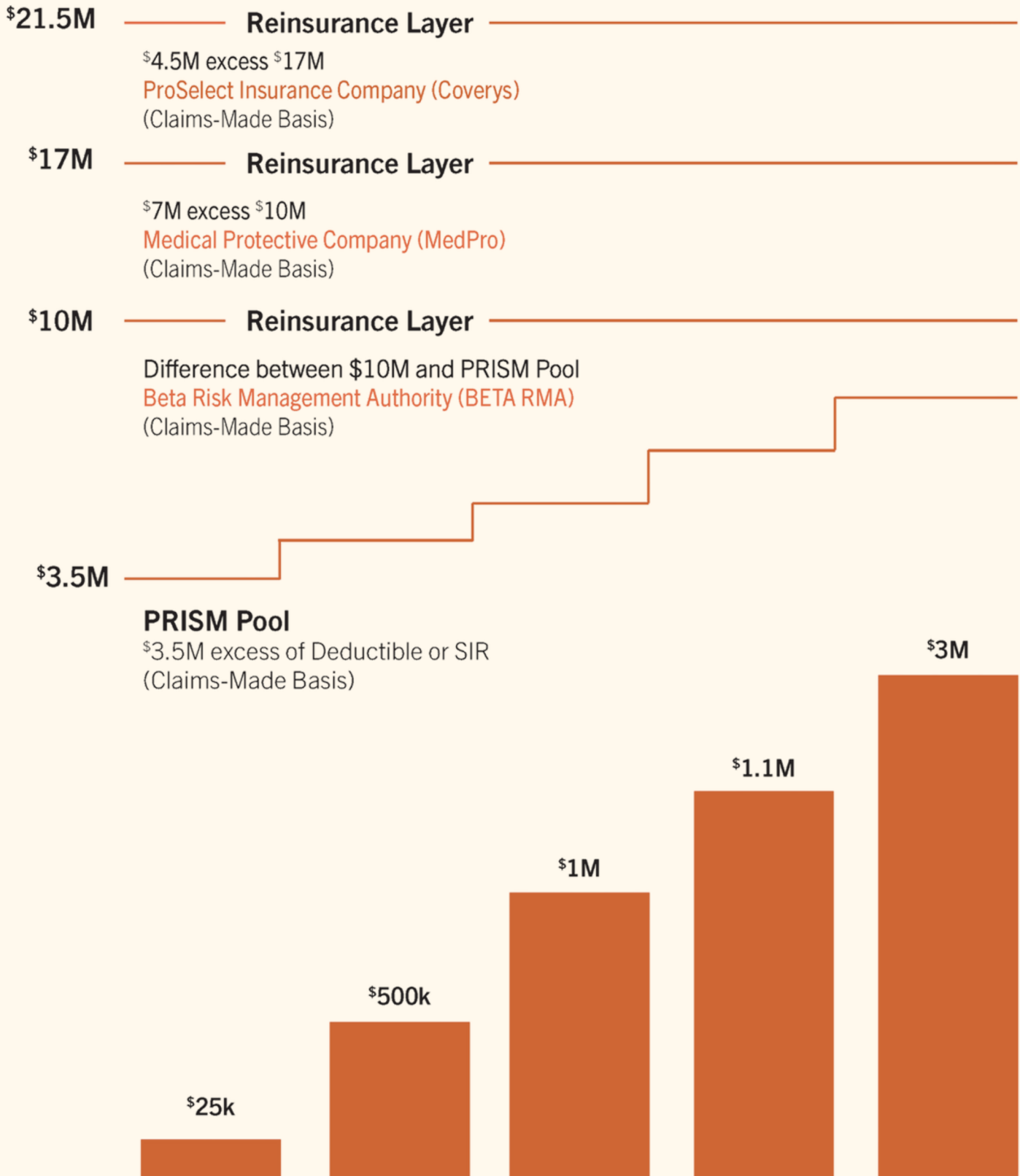
## STRUCTURE

Members benefit from a two-part program structure designed to meet diverse needs: Program 1 members retain control with self-insured retentions, while Program 2 members enjoy the protection of deductible and dollar-one coverage. Together, both Programs unite in a pooled layer of coverage and reinsurance—leveraging risk-sharing, flexibility, and the collective purchasing power that strengthens every member.

## COST CONTAINMENT

- Crisis Incident Management Services
- In-house Labor Law/Employment Practice Services
- Risk Management Services with Garrett Law LLP
- Claims Indexing

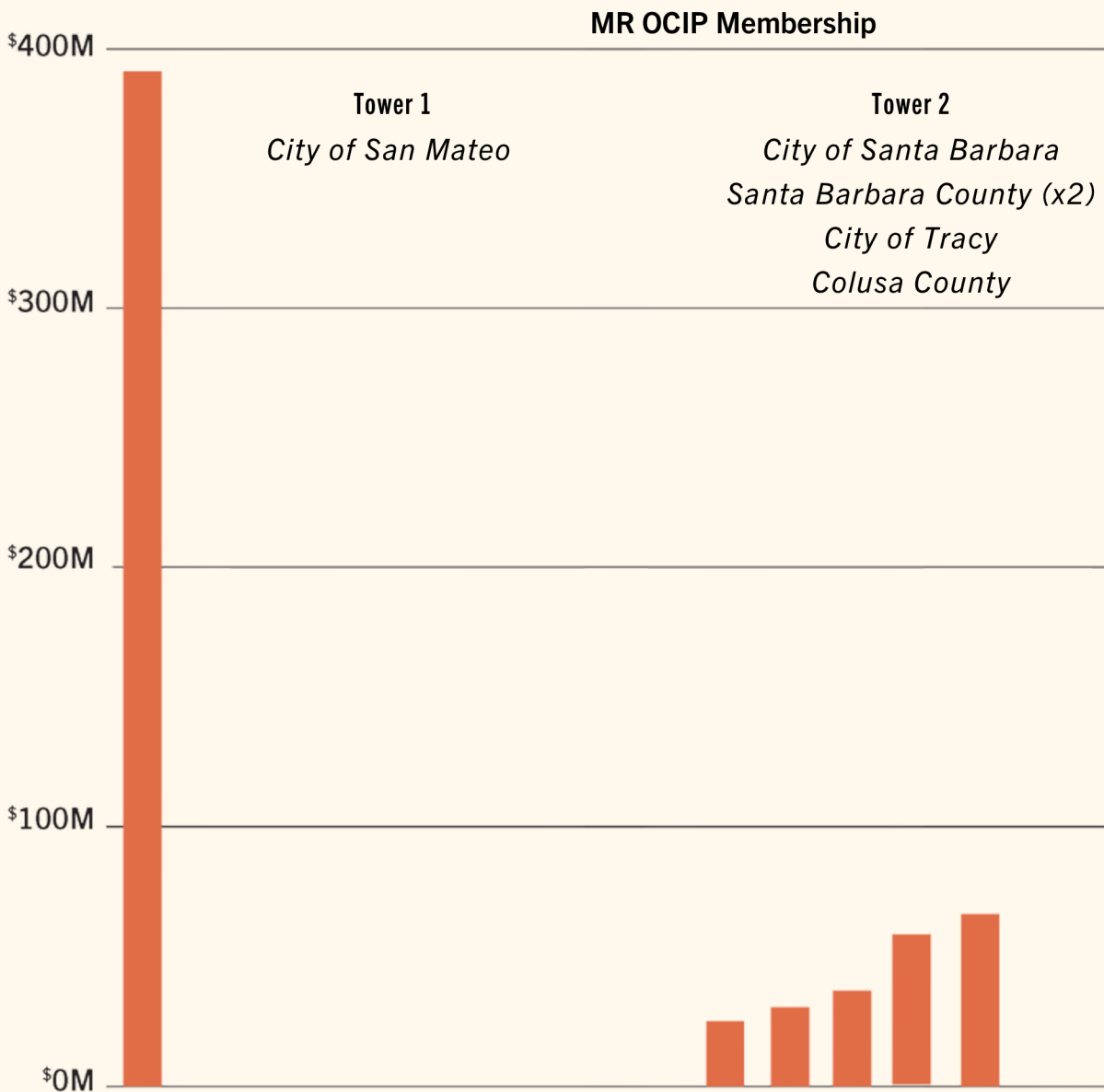
# PROGRAM STRUCTURE



# MASTER ROLLING OWNER CONTROLLED INSURANCE PROGRAM

## ABOUT THE PROGRAM

The Master Rolling Owner Controlled Insurance Program (MR OCIP) enables members to purchase workers' compensation and general liability coverage for all eligible parties (owner, general contractor, and sub-contractors) working on their construction projects. MR OCIP can include projects as small as \$20M (Tower 2), enabling members to receive the benefits of a "wrap-up" on projects that otherwise wouldn't qualify because of their size.

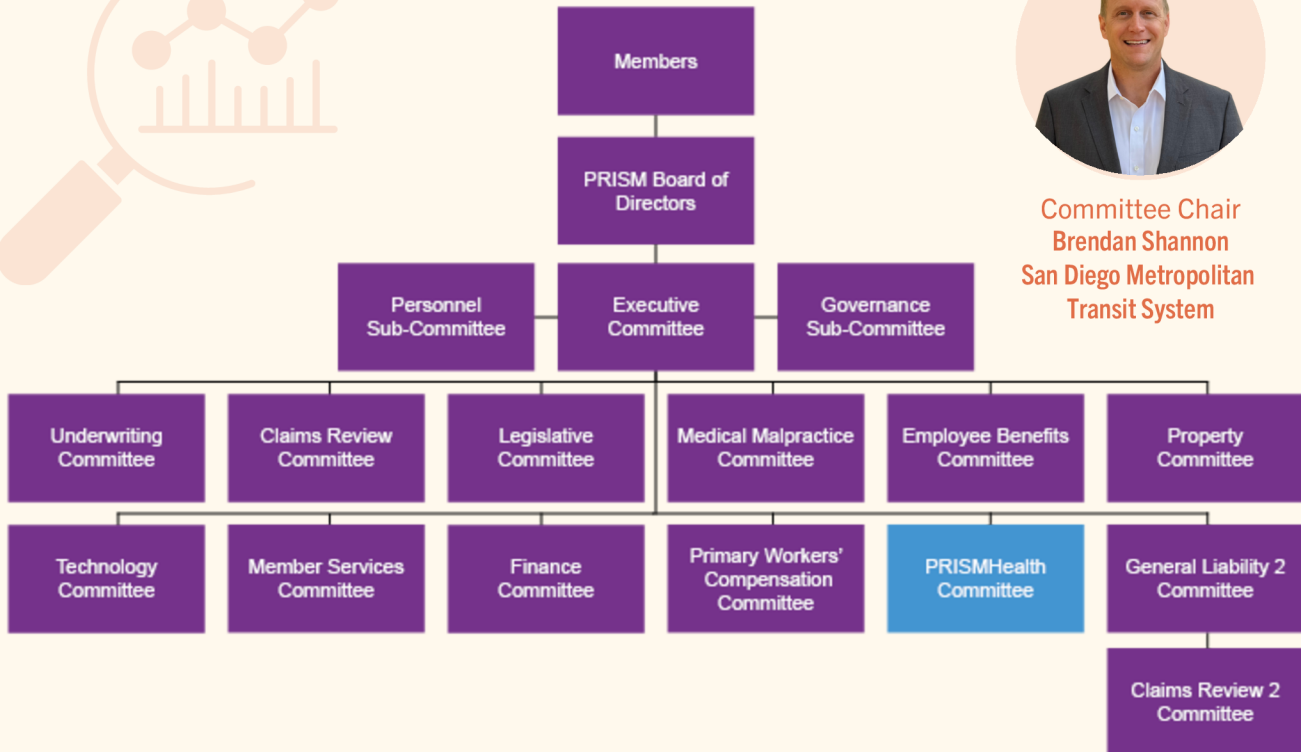


# PRISMHEALTH

The PRISMHealth Program is governed by the PRISMHealth Committee, which oversees program funding, new member applications, renewals, and cost-containment strategies.



**Committee Chair  
Brendan Shannon**  
San Diego Metropolitan  
Transit System



## ABOUT THE PROGRAM

The PRISMHealth program is charting a bold new course—emerging as an independent health pool built for resilience, innovation, and growth. Leveraging the collective strength of our member agencies, we are transforming the way public employers deliver healthcare benefits by combining financial stability with forward-thinking cost containment strategies that anticipate today’s needs and prepare for future challenges.

PRISMHealth is advancing initiatives that expand access to high-quality care, support members in managing chronic conditions, and connect employees and retirees to programs that improve whole-person well-being. Our strategic goal is to move beyond the traditional model of healthcare to become a true health and wellness platform—one that empowers agencies to provide benefits that foster healthier workplaces, stronger communities, and lasting value for those we serve.

## COST CONTAINMENT

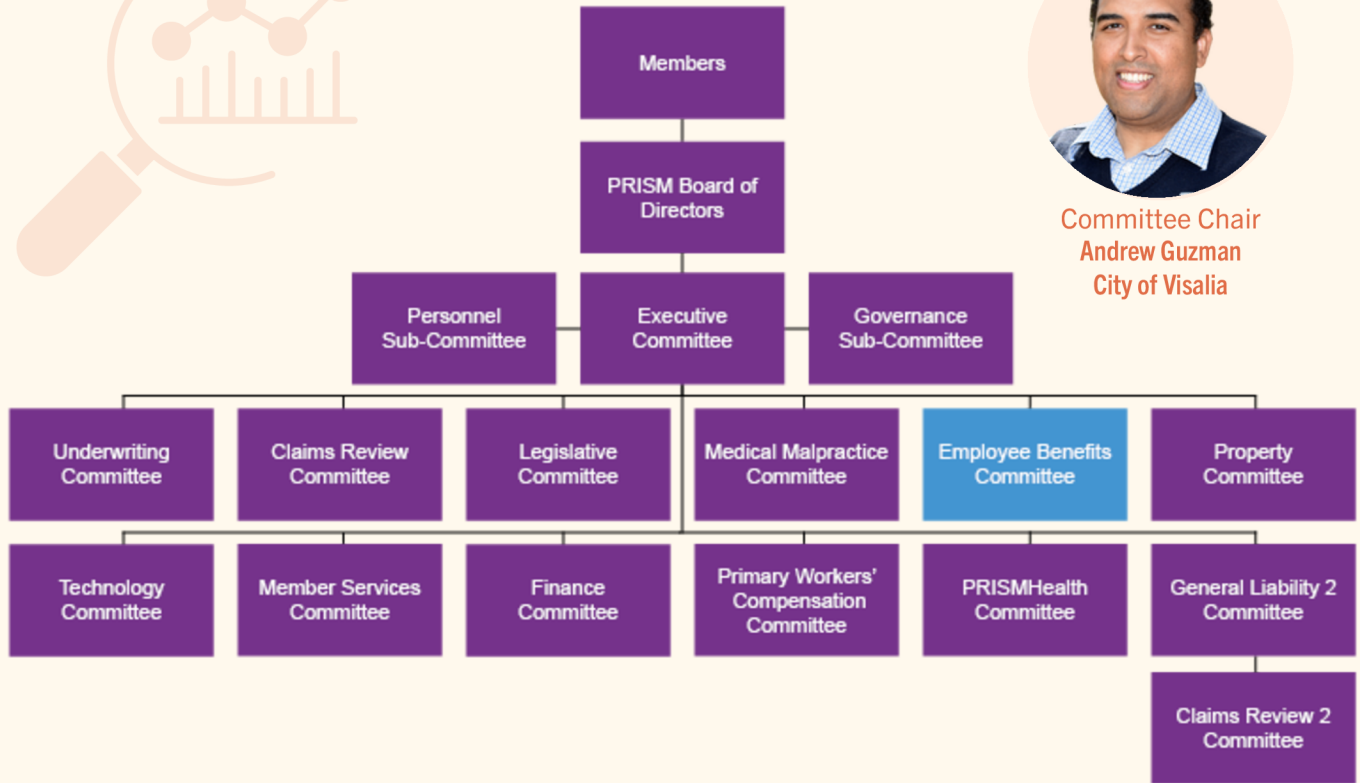
- Centers of Excellence for high-quality, lower-cost surgeries and cancer care
- Digital musculoskeletal therapy, increases well-being
- Personalized weight management/chronic condition support
- Low to no-cost generic medications

# DENTAL

The Employee Benefits (EB) Committee governs the Dental Program and other Ancillary EB Programs (Vision, Employee Assistance Program, Life, Short Term Disability, and Long Term Disability). The Committee oversees program funding, new member applications, renewals, and cost-containment strategies.



Committee Chair  
Andrew Guzman  
City of Visalia



## ABOUT THE PROGRAM

The PRISM Dental Program is one of the largest public-sector dental pools in California. Members may select from pooled dental coverage, stand-alone self-funded arrangements, or DHMO plan options, ensuring a tailored fit for the needs of each agency and its workforce. PRISM Dental brings nearly 100,000 public employees and retirees together, combining size with strategy, flexible plan designs, diverse carrier options, and unmatched purchasing power for our members.

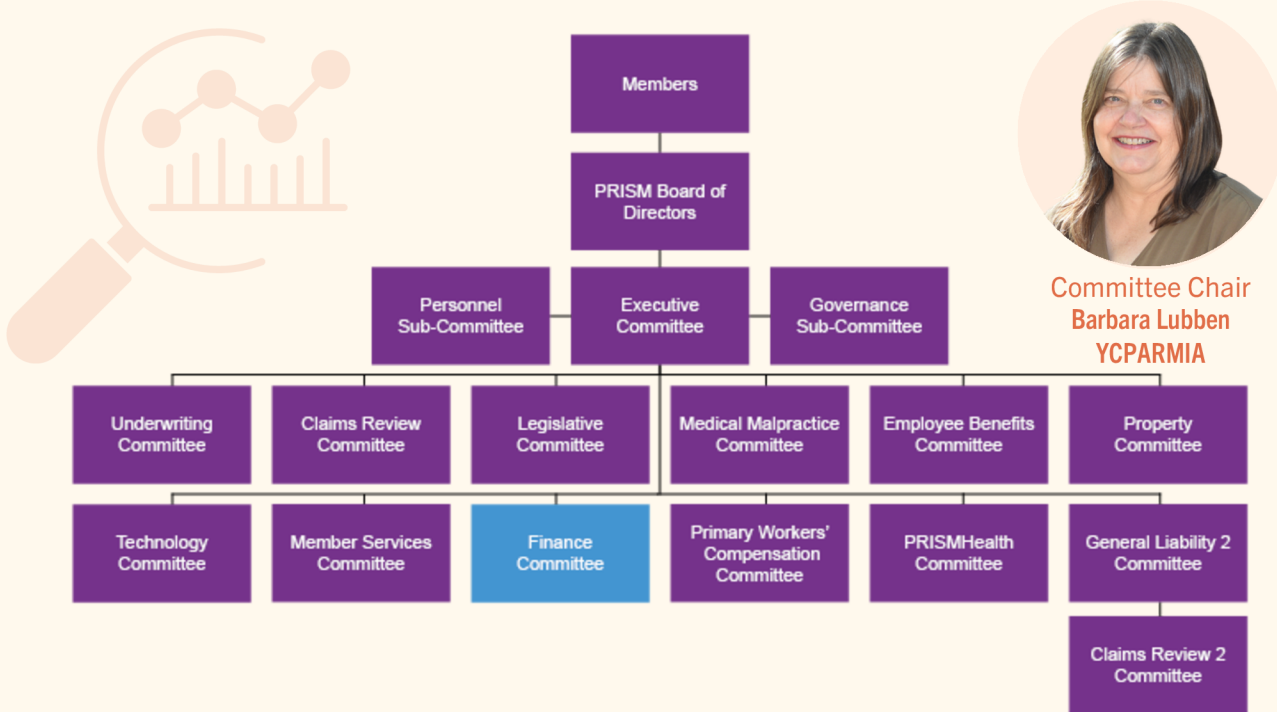
## COST CONTAINMENT

- Provider recruitment strategies for rural regions
- Custom out-of-network provider reimbursements
- Discount hearing aids, Lasik and dental hygiene products (e.g. electric toothbrushes, oral irrigators, etc.)

# AWARDS & ACCOMPLISHMENTS



The Finance Committee oversees PRISM's investment program for trust monies, as well as its accounting and internal controls.



As a member of the Government Finance Officers Association (GFOA), PRISM has received the Certificate of Achievement for Excellence in Finance Reporting for its ACFR, the Award for Outstanding Achievement in Popular Annual Finance Reporting, and the Distinguished Budget Presentation Award.

PRISM continues to be accredited with excellence by the California Association of Joint Powers Authority (CAJPA), and recognized by the Association of Governmental Risk Pools (AGRiP), a national pooling association. Both the CAJPA accreditation and AGRiP recognition are indications of exceptional compliance with the best management and financial practices.



# FINANCIAL LETTER

October 3, 2025

Board of Directors  
Public Risk Innovation, Solutions, and Management (PRISM)

As we reflect on fiscal year 2024/25, we are very pleased with all that was accomplished. We will discuss our most significant accomplishments here, in brief.

- PRISM continues development on its proprietary claims management system, Spectra. After three years of development, the system was launched for Liability claims October 2023. Workers' Compensation claims were added to the system in February 2025. The next phases will involve conversion of the Primary Workers' Compensation TPAs as well as building out a member usage option. We are very proud to report that this large IT project has continued to be on time and within budget.
- PRISM continues to increase information on its website and functionality for managing our pool. Development continues with the objective of streamlining the annual workers' compensation payroll audit, and offering new information intake and tracking functionality. Also, a new PRISM AI Chatbot was launched in July 2025 to help members navigate the website.
- Participation in PRISM's Paid Family Leave (PFL) coverage program has grown over the last several years. Starting January 1, 2025, PRISM is reporting PFL as a stand-alone major program, rather than an ancillary coverage under the Miscellaneous Programs.

This report contains easy-to-read information on PRISM's programs, an overview of the PRISM's financial condition, and highlights of the financial activity for the fiscal year ended June 30, 2025. Included are comparative financial statements to the year ended June 30, 2024, including the Statement of Net Position and the Statement of Revenues, Expenses and Changes in Net Position, which conform to the Generally Accepted Accounting Principles (GAAP). This information is derived from our Annual Comprehensive Financial Report (ACFR). The ACFR contains more detailed information and can be found on our website at [www.PRISMRisk.gov](http://www.PRISMRisk.gov). Our ACFR, for the fiscal year ending June 30, 2024, was awarded the Certificate of Achievement for Excellence in Financial Reporting by the Government Finance Officers Association of the United States and Canada (GFOA). In order to be awarded a Certificate of Achievement, a government unit must publish an easily readable and efficiently organized comprehensive annual financial report, whose contents conform to program standards. Such an ACFR must satisfy both GAAP and applicable legal requirements. A Certificate of Achievement is valid for a period of one year only. We believe our ACFR continues to conform to the Certificate of Achievement program requirements and will be submitting our ACFR for the current year to the GFOA.

# FINANCIAL LETTER

## Financial Highlights

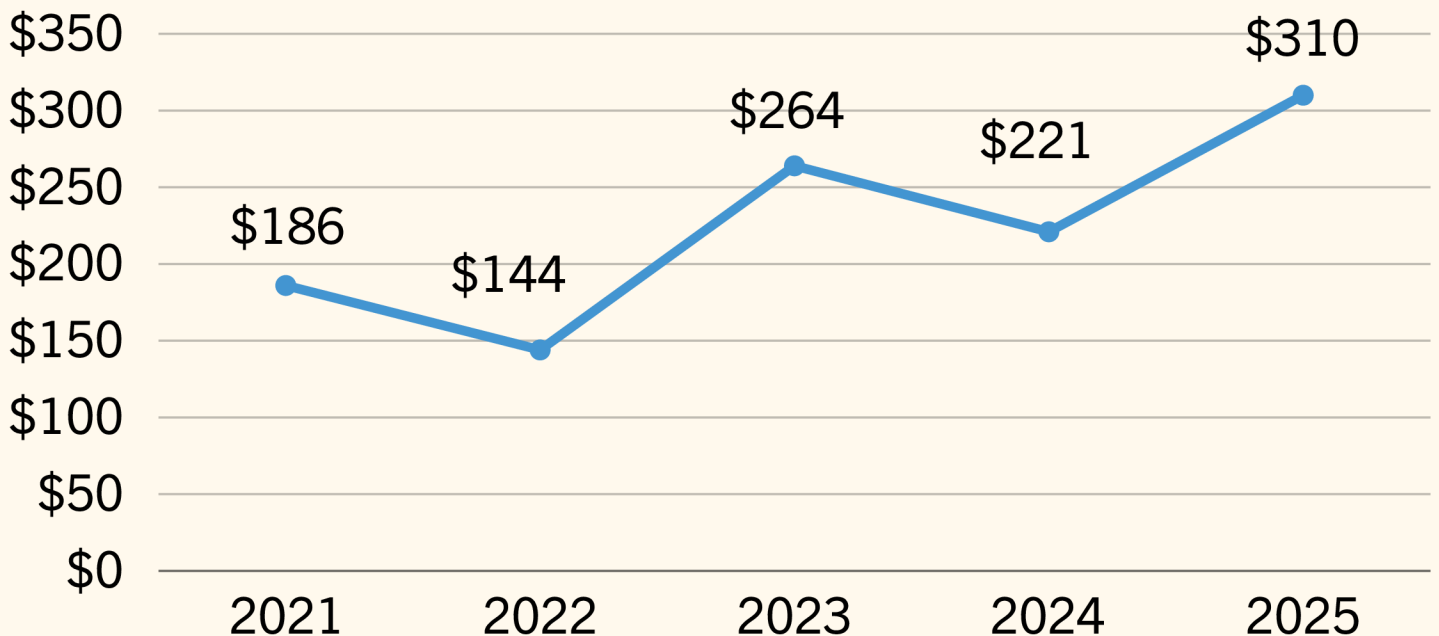
### Net Position

Net Position is defined as Total Assets plus Total Deferred Outflows of Resources, minus Total Liabilities and Deferred Inflows of Resources. PRISM started the fiscal year of 2024/25 with a net position of \$221M after restatements for the implementation of GASB Statement 101, Compensated Absences. Our ending balance in net position at June 30, 2025 was \$310M, which is an increase of \$89M from the prior year. PRISM's Net Operating Loss of \$10M was offset by net Nonoperating Revenue of \$99M – almost all of which was investment income.

We were pleased to see positive investment returns and increased valuations in 2024/25. During the 2021/22 fiscal year, prevailing interest rates were rising quickly. This resulted in the fair market value of PRISM's investments falling below the amortized cost, leading to unrealized losses on those investments. Interest rates have now stabilized and increases in fair value of \$40M and \$25M were recognized for fiscal years 2024/25 and 2023/24, respectively. Changes in fair market value are primarily driven by fluctuations in the market interest rate and mark-to-market valuation of equities held in PRISM's captive insurance company, Affiliate Risk Captive (ARC). The potential direction of interest rates, up or down, and the interest earned are both considered at the time the investment is made.

The following chart shows PRISM's Net Position for the last five years:

## Net Position Trend (in millions)

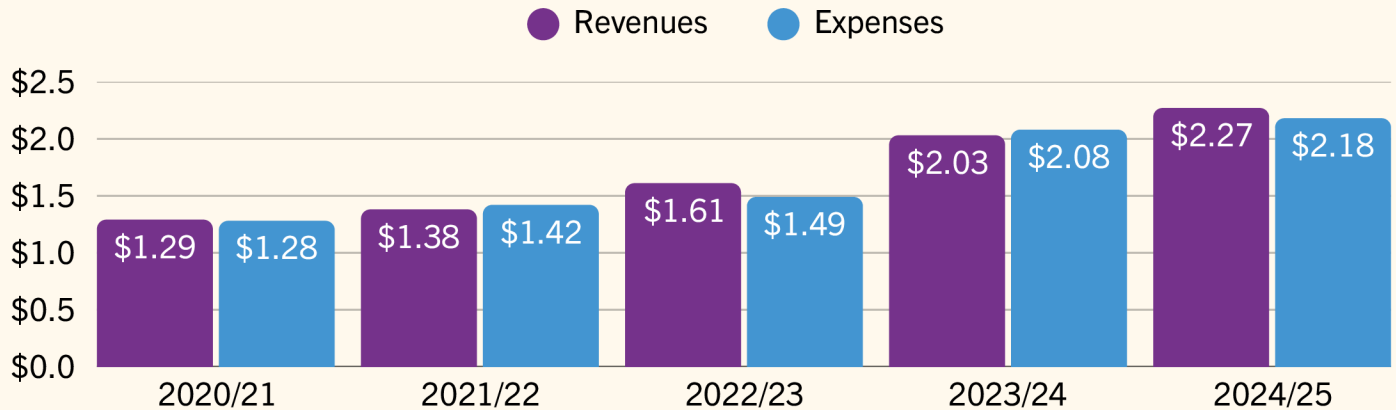




# FINANCIAL LETTER

The following chart shows how Revenues and Expenses have changed over time.

## Operating Revenues and Expenses (in billions)



### Claim Liabilities

After Net Position, claim liabilities are the most significant line item on our financial statements. Claim liabilities are shown discounted, which is at their net present value, considering investment earnings over time. Every year, the claim liabilities increase due to the new program year being added along with adjustments for adverse development in prior years' claims. The claim liabilities decrease due to payments made during the current fiscal year and positive development in prior years' claims.

Overall, the claim liabilities increased \$187M from \$1.19B at June 30, 2024 to \$1.37B at June 30, 2025. Claim liabilities showed a net increase for ARC and all PRISM pooled programs with the exception of the Excess Workers' Compensation and General Liability 2 programs which had a slight decrease.

The target equity range is what PRISM considers desirable equity that should be on hand as a reserve for loss development. The governing committees for each program use this information to evaluate the overall financial health of the program, determine how much premium to collect at renewal, and whether to declare a dividend. The following chart shows the target equity range for each program, and the Net Position of those programs at June 30, 2025.

Program	Target Equity Range in Millions of \$		Program Net Position in Millions of \$
	Low	High	June 30th, 2025
Primary Workers' Compensation	\$19	\$51	\$54
Excess Workers' Compensation	30	111	53
General Liability 1	111	149	1
Medical Malpractice	14	27	14

# FINANCIAL LETTER

## Revenues

Total revenues were \$2.27B during 2024/25, which is an increase of \$240M from the \$2.03B in revenue for fiscal year 2023/24. All major programs reported higher operating revenue in 2024/25 as compared to 2023/24 with the exception of the Excess Workers' Compensation which had a slight decrease. Retained risk revenue, including a \$7M assessment levied on members of the GL2 Program, was 28% higher in 2024/25 compared to 2023/24, while transferred risk revenue increased by 10%. A portion of the proceeds from the AmTrust commutation, \$77M, was recognized as part of income in 2023/24. Investment income increased 51% year over year, from \$65M in 2023/24 to \$99M in 2024/25.

For the 2024/25 renewal, many of the property and casualty programs experienced rate increases, in particular the liability and property programs are facing hard markets and increased claims costs. Increases to the exposure base (e.g. payroll for workers' compensation coverage, total insured value for property coverage, etc.) compounded the impact of rate changes.

Employee benefit programs renew on the calendar year basis. The 2026 PRISMHealth Program renewal was approved at 14.24%. The renewal increase takes into consideration a planned transition of the PRISMHealth Program from a shared risk arrangement to a stand-alone purchasing model effective October 2025. This change in coverage structure will allow PRISM to tailor its approach to assuming and managing risk as healthcare marketplace costs continue to increase. The Dental Program was renewed with varying member rate increases between 2.3% and 3.8% year-over-year. The Dental Program maintains a strong net position; the program ended the fiscal year with \$8.4M in unrestricted equity after returning \$3M in dividends to the membership.

## Investment Income

PRISM experienced \$99M in investment income for fiscal year 2024/25, compared to \$65M in fiscal year 2023/24. As explained earlier, investment valuations increased and interest rates have stabilized over the past few years.

## Expenses

PRISM continued to purchase insurance to cover risks when that option was more cost effective than pooling the risk. In 2024/25, insurance related expense was \$1.5B, up from \$1.4B in 2023/24. Purchased insurance and related broker fees were 71% of all expenses, while claim costs accounted for 26%. Member dividends declared during 2024/25 represent 1% of the overall expenses and include \$9.5M in Primary Workers' Compensation Program, \$2.2M in the Medical Malpractice Program, and \$3M in the Dental Program. The remaining expenses are for program services, and administrative and risk control costs that made up the remaining 2% of expenses.



# FINANCIAL LETTER

## New and Ongoing Initiatives

Strategic initiatives during the year focused on: Communication, Outreach & Influence; Member Programs, Products & Services; and Organizational Development & Sustainability.

### **Communication, Outreach & Influence**

Member engagement remains a critical initiative for PRISM. It is imperative that members understand and experience PRISM as an “owner” of the JPA, not as an insurance purchaser. Several projects stand out in this area, including:

- Assisting member risk management staff with educating their stakeholders regarding the importance of risk management and PRISM's leadership in this area.
- Creating an internship program to spark interest in the field of risk management.
- Creating State of the market narratives and talking points were created for the GL1, GL2, Property, and Workers' Compensation Programs.
- Messaging to the Media for Large Claims Settlements/Verdicts was created and distributed for member use.
- Creating a Task Force to explore the development of a JPA to provide Jail Medical Services as a mechanism for members to collectively self-service or collective bargain.
- Creating a Task Force to explore the development of a JPA to provide TPA (FPA) services.

### **Member Programs, Products & Services**

PRISM created and delivered numerous training and resource programs for members, including:

- Delivered instructor led presentations and training to over 1,000 attendees
- Continued to offer four (4) POST Certified Courses
- Critical Incident Stress Management (CISM) for Peer Supporters training, offered in partnership with, The Counseling Team International (TCTI), was hosted by three member first responder agencies throughout California
- Developed eight new courses in partnership with Vector Solutions and added 13 new OSHA & Compliance courses, 5 Education Courses, 12 HR & Business Skills Courses, 3 Office Productivity Courses, and over 41 new/updated courses within the various premium catalogs
- Added Entry Level Driver Training (ELDT) at no additional cost for PRISM Members.

# FINANCIAL LETTER

## New and Updated Services include:

- The Counseling Team International (TCTI)
  - First Responder Peer Support Services
- Belfor
  - Property Program Emergency Restoration Services
- Benchmark Analytics
  - Offered an Accelerator Program incentivizing utilization of Early Intervention System (EIS) Services for the GL1 Program
- Enterprise Risk Consultants now has 28 available consultants and 5 active assignments
- Employment Practices Legal Advice Service – brought in-house effective January 1, 2025. Since then, the hotline has provided legal support on over 400 unique matters on behalf of 137 PRISM members and sub-members, this reflects an average of 62 matters per month.

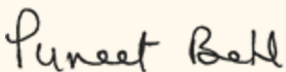
## **Organizational Development & Sustainability**

At the 2025/26 renewal, existing member retention was 99% and four new members joined PRISM's programs. Meanwhile, the PRISM ARC captive has continued its national expansion campaign with 11 out of state participants purchasing coverage during 2024/25.

The state of the property and casualty market has not greatly improved. We are pleased to report that all of the Programs renewed successfully, although prices increased again in most cases. Most reinsurers did not change their risk appetite or available capacity, and we saw a few new entrants into the space – indicating that the marketplace is starting to stabilize. However, our renewals are often reflective of our own loss history, which has continued to trend poorly due to increased settlement values and astronomical jury verdicts. As we have reported previously, this trend continues to affect all public agencies in California, as well as other jurisdictions in the western United States. PRISM's group volume and great reputation will certainly continue to help to mitigate the impact of the marketplace.

Our financial statements are following. With the help of the members, staff, brokers, and business partners, PRISM continues to accomplish its mission of providing risk coverage programs and risk management services to its members, which drive member stability, efficiency, and best practices.

Respectfully submitted,



Puneet Behl, CPA  
Chief Financial Officer

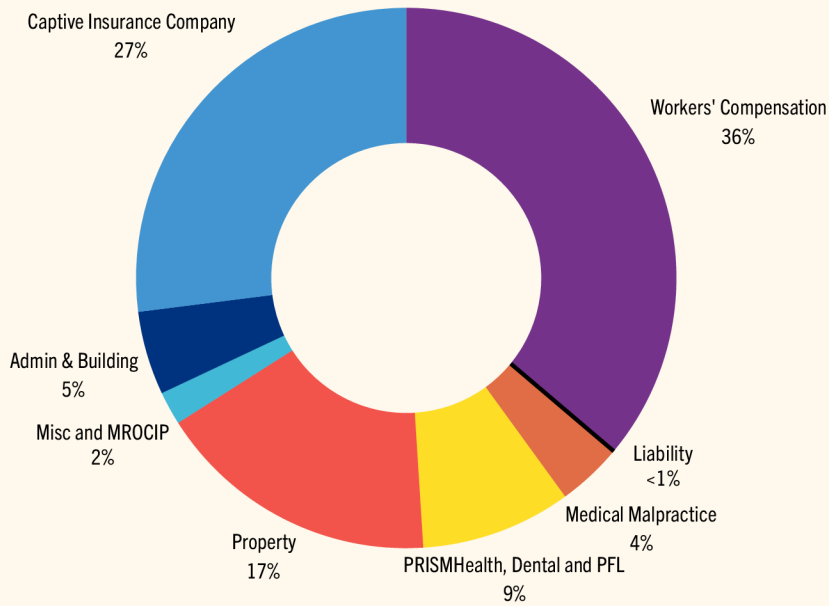


Gina Dean  
Chief Executive Officer

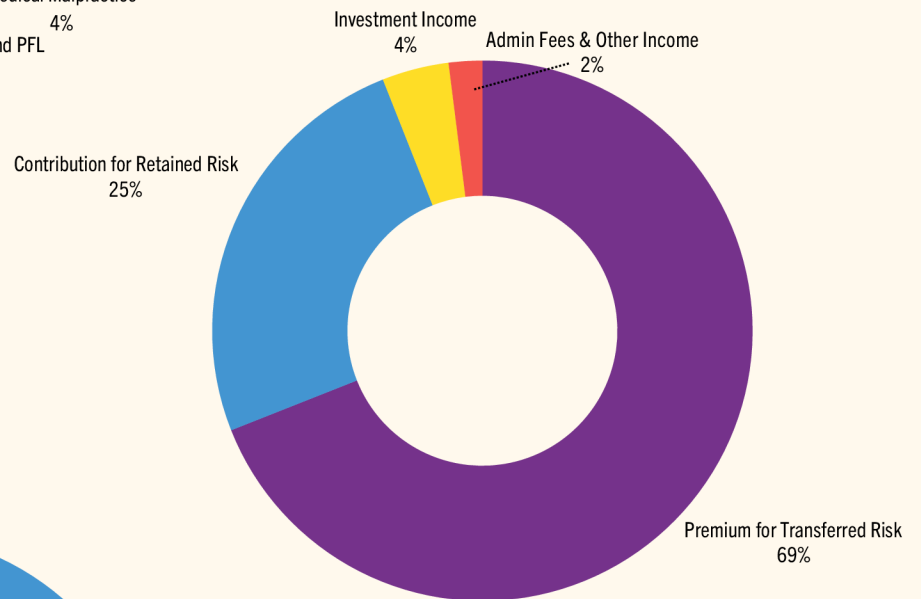


# FINANCIAL PROFILE

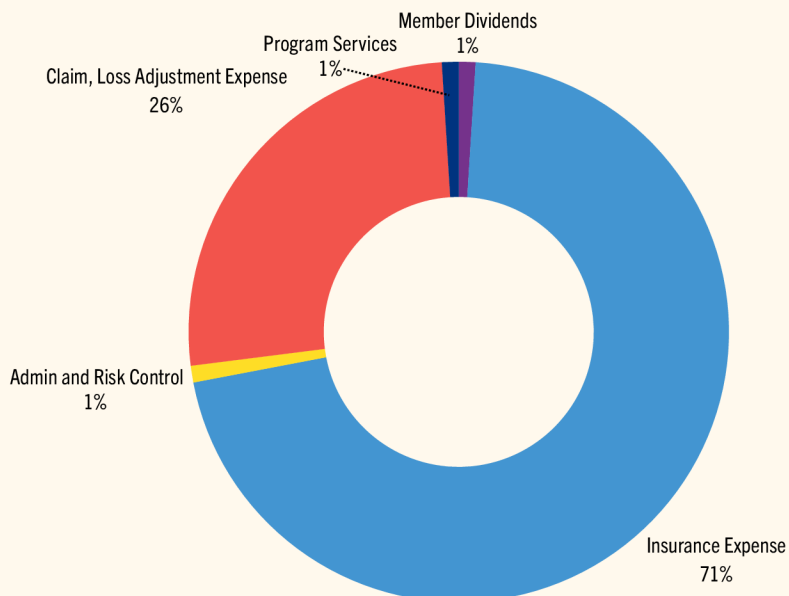
## NET POSITION BY PROGRAM



## REVENUE



## EXPENSES



# FINANCIAL PROFILE

Public Risk Innovation, Solutions, and Management  
Statement of Net Position  
June 30, 2025 and 2024

	<u>June 30, 2025</u>	<u>June 30, 2024</u>
Assets:		
Cash and Cash Equivalents	\$ 187,787,497	\$ 89,500,017
Investments	1,251,429,623	987,251,260
Receivables	194,288,230	192,695,696
Other Assets and Deferred Outflows of Resources	197,594,656	169,792,297
Land, Buildings and Equipment (Net)	<u>13,010,036</u>	<u>13,038,230</u>
 Total Assets and Deferred Outflows of Resources	 <u>1,844,110,042</u>	 <u>1,452,277,500</u>
Liabilities:		
Accounts Payable, Due to Members and Deposits from Carriers	146,407,973	37,105,062
Unearned Income and Other Liabilities	7,747,986	1,605,757
Pension & OPEB Liabilities	5,039,736	5,124,892
Claim Liabilities	<u>1,374,587,179</u>	<u>1,187,106,846</u>
 Total Liabilities and Deferred Inflows of Resources	 <u>1,533,782,874</u>	 <u>1,230,942,557</u>
Net Position:		
Invested in Capital Assets	13,010,036	13,038,230
Unrestricted	<u>297,317,132</u>	<u>208,296,713</u>
 Total Net Position	 <u>\$ 310,327,168</u>	 <u>\$ 221,334,943</u>



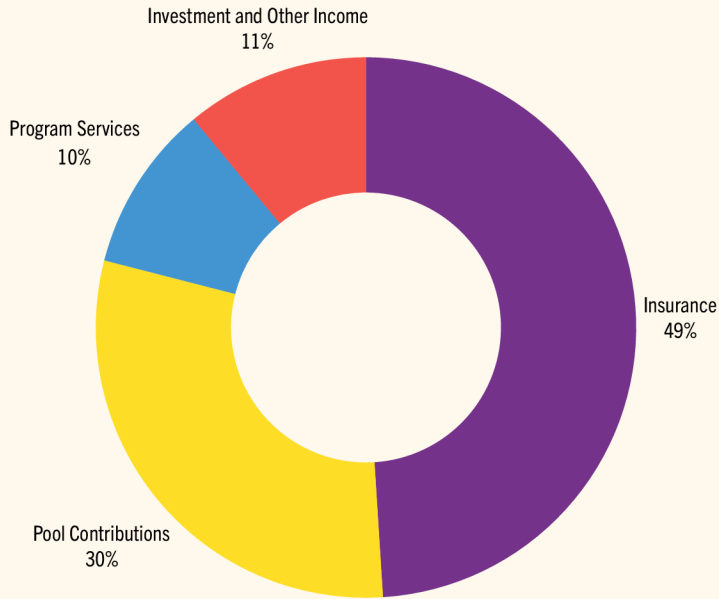
# FINANCIAL PROFILE

Public Risk Innovation, Solutions, and Management  
Statement of Revenues, Expenses & Changes in Net Position  
For the Fiscal Years Ended June 30, 2025 and 2024

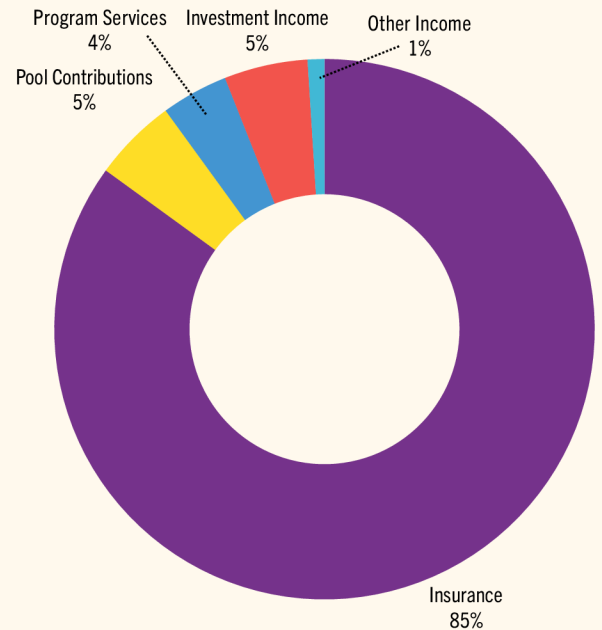
	<u>June 30, 2025</u>	<u>June 30, 2024</u>
Revenues:		
Premiums for Transferred Risk	\$ 1,518,545,602	\$ 1,376,138,017
Broker Fees	38,121,796	30,093,484
Contributions for Retained Risk	568,816,380	443,940,217
Dividend Income	17,888	679,156
Investment Income, net	98,575,237	65,409,866
Member Services	540,785	834,528
Administration Fees	37,887,599	35,202,047
Public Entity Fees	163,638	162,024
AmTrust Commutation	—	77,045,342
Other Income	9,997,134	3,596,289
	<u>2,272,666,059</u>	<u>2,033,100,970</u>
Total Revenues		
Expenses:		
Insurance and Provision for Losses:		
Insurance Expense	1,518,064,624	1,357,108,873
Broker Fees	38,121,796	30,088,013
Provision for Insured Events	564,155,305	630,924,432
Unallocated Loss Adjustment Expenses	2,436,388	(3,343,388)
Program Services	17,227,517	20,216,479
Member Services and Subsidies	2,478,358	2,608,261
General Administrative Services	24,504,869	22,380,156
Depreciation and Amortization	1,947,504	2,101,937
Member Dividends	14,737,473	13,197,766
	<u>2,183,673,834</u>	<u>2,075,282,529</u>
Total Expenses		
Changes in Net Position	<u>88,992,225</u>	<u>(42,181,559)</u>
Net Position:		
Beginning of Year, as Previously Presented	221,610,493	263,827,419
Restatements	(275,550)	(310,917)
Beginning of Year, as Restated	<u>221,334,943</u>	<u>263,516,502</u>
Net Position, End of Year	<u>\$ 310,327,168</u>	<u>\$ 221,334,943</u>

# FINANCIAL PROFILE

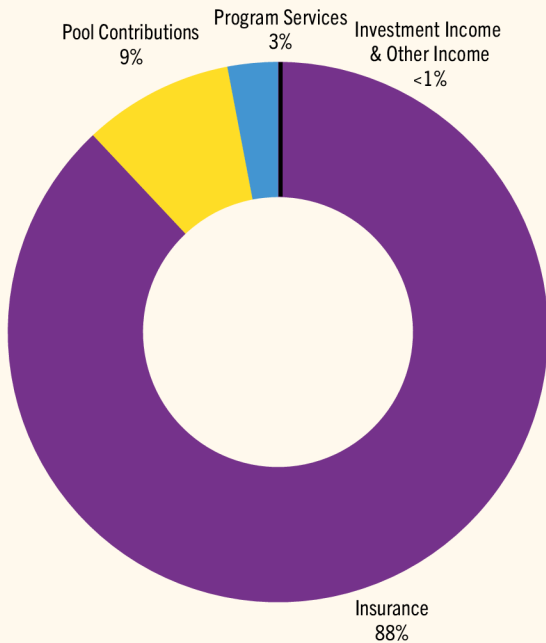
## PRIMARY WORKERS' COMPENSATION



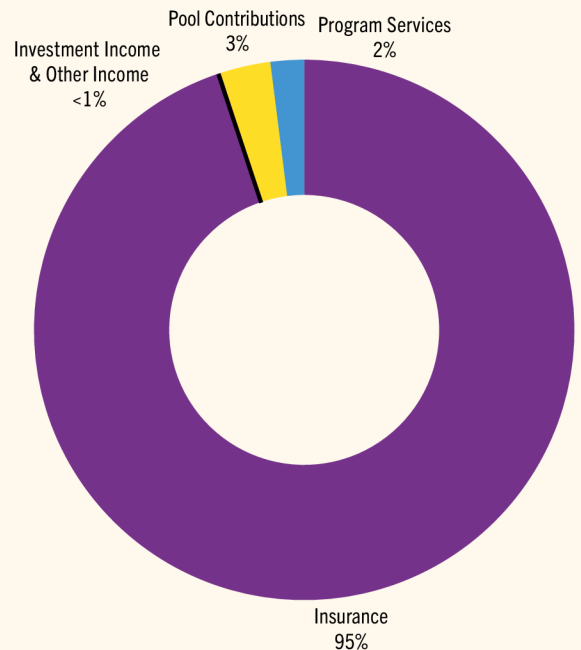
## EXCESS WORKERS' COMPENSATION



## GENERAL LIABILITY 1



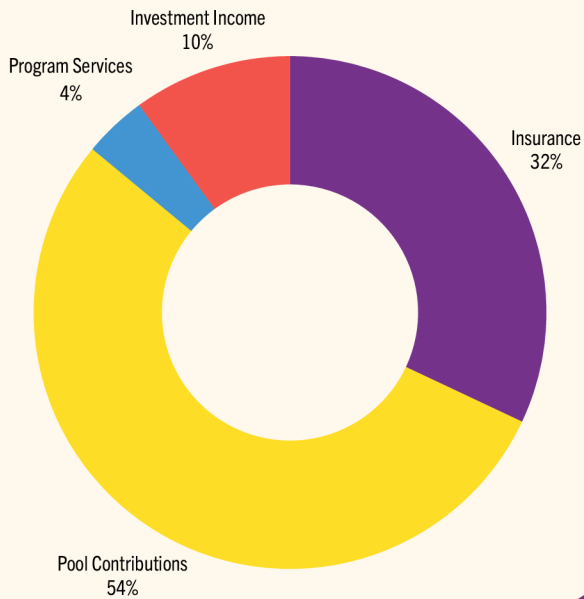
## GENERAL LIABILITY 2



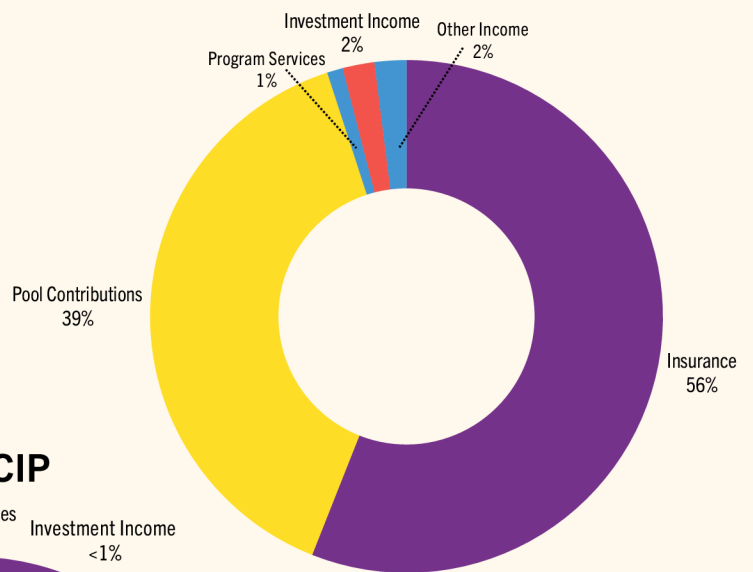


# FINANCIAL PROFILE

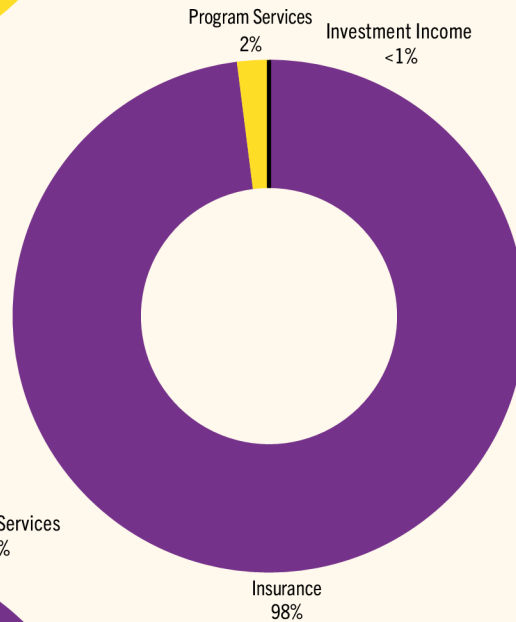
## MEDICAL MALPRACTICE



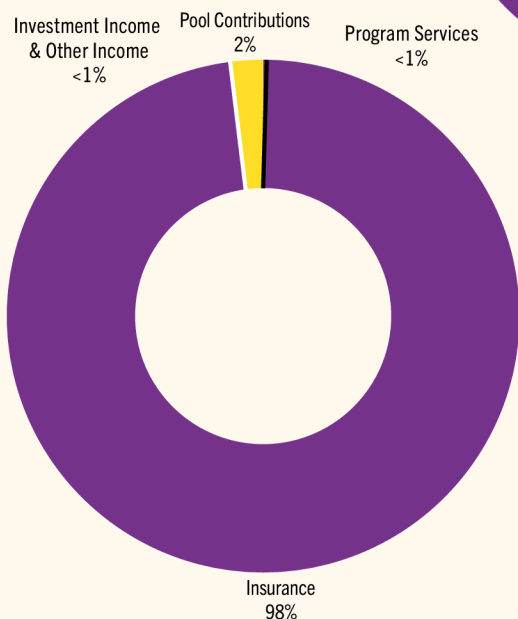
## PROPERTY



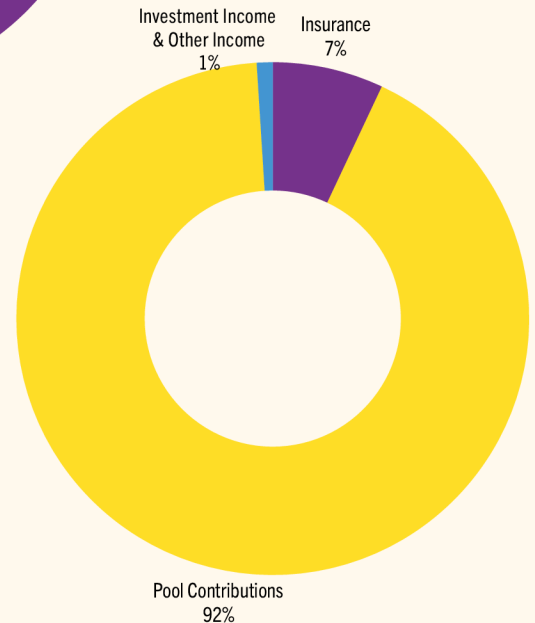
## MR OCIP



## PRISMHEALTH



## DENTAL



# PAST PRESIDENTS & EXECUTIVE COMMITTEES

OVER 4 DECADES OF PRESIDENTIAL LEADERSHIP  
BRINGING PRISM INTO FOCUS



## Past Presidents

Karen Caoile | Contra Costa County, 2025  
Barbara Lubben | Yolo County, 2024  
Heather Rose | Mendocino County, 2023  
Janell Crane | Sonoma County, 2020-2021  
Kerry John Whitney | Napa County, 2019  
James Brown | Merced County, 2017-2018  
Scott Schimke | GSRMA, 2012, 2016, & 2022  
Jim Sessions | Riverside County, 2011 & 2015  
Larry Moss | EBRPD, 2014  
Barbara Lubben | Alameda County, 2013  
Lance Sposito | Santa Clara County, 2010  
Supv. Peter W. Huebner | Sierra County, 2009  
Ron Harvey | Contra Costa County, 2008  
Marcia Chadbourne | Sonoma County, 1996 & 2007  
Peggy Scroggins | Colusa County, 2006  
David L. Dolenar | Stanislaus County, 2005  
Charles Nares | San Diego County, 2004  
Richard Robinson | Tehama County, 1997 & 2003  
Kimberly Kerr | Humboldt County, 2001-2002  
Brent Harrington | Calaveras County, 2000  
Robert Kessinger | Colusa County, 1999  
J. Terry Roberts | Fresno County, 1983-84 & 1998  
Don Blackhurst | Santa Clara County, 1995  
Arthur Giumini | San Luis Obispo County, 1994  
John Larkin | Trinity County, 1993  
Charles Graham | Sutter County, 1992  
Norman Phelps | Shasta County, 1991  
Ronald Whipp | Santa Cruz County, 1990  
Gail Braun | Sonoma County, 1988-1989  
John Crane | Calaveras County, 1988  
James L. Gale | Kings County, 1987  
Charles Mitchell | Santa Barbara County, 1985-1986  
Supv. Barbara Crowley | Tehama County, 1980-1982

## 2025 Executive Committee



From left to right: Rebecca Craig (Napa County), Barbara Lubben (Yolo County), Scott H. De Moss (Glenn County), Heather Rose (Mendocino County), Scott Schimke (GSRMA/NCSDIA), Karen Caoile (President, Contra Costa County), Aaron Holmberg (Vice President, Inyo County), Janell Crane (Sonoma County)

**Not pictured:** Lance Sposito (Santa Clara County)

## 2026 Executive Committee

Aaron Holmberg (President), Inyo County  
Scott H. De Moss (Vice President), Glenn County  
Jenny Thompson, Fresno County  
Scott Schimke, GSRMA  
Heather Rose, Mendocino County  
Rebecca Craig, Napa County  
Greg Milligan, Santa Barbara County  
Lance Sposito, Santa Clara County  
Ed Valenzuela, Siskiyou County  
Janell Crane, Sonoma County  
Barbara Lubben, YCPARMIA

# PRIMARY WORKERS' COMPENSATION PROGRAM MEMBERS



Amador County	Kings County Area Public Transit Agency
Amador Transit	Kings Waste & Recycling Authority
Calaveras County	Lake County
Central Sierra Child Support Agency	Mendocino County
City of Belmont	Morongo Basin Transit Authority
City of Carmel by the Sea	Nevada County
City of Imperial Beach	PRISM
City of Lancaster	Sacramento Area Sewer District
City of Lindsay	Sacramento County
City of Rancho Cordova	San Mateo Consolidated Fire Department
El Dorado County	Santa Barbara County
Evergreen Elementary School District	Self Insured Risk Management Authority 1 JPA
First 5 Contra Costa Children and Families Commission	Siskiyou County
Gold Coast Transit District	San Luis Obispo Regional Transit Authority JPA
Humboldt County	Tahoe Transportation District
Humboldt Transit Authority	Town of Colma
Huntington Beach Union High School District	West San Gabriel WC JPA
Inyo County	Yuba County

# EXCESS WORKERS' COMPENSATION PROGRAM MEMBERS

Listed by Self Insured Retention

**PRIMARY**

CSU Risk Management Authority

**\$125,000**

Alpine Fire Protection District\*

Amador County

Amador Transit

Bonita/Sunnyside Fire Protection District\*

Butte County

Calaveras County

Casitas Municipal Water District

Central Sierra Child Support Agency

City of Belmont

City of Calexico

City of Carmel by the Sea

City of Del Mar

City of El Cajon

City of Imperial Beach

City of Lancaster

City of Lindsay

City of Los Alamitos

City of Rancho Cordova

City of Solana Beach

City of South Pasadena

El Dorado County

Evergreen Elementary School District

First 5 Contra Costa Children & Families Commission

Gold Coast Transit District

Humboldt County

Humboldt Transit Authority

Huntington Beach Union High School District

Inyo County

Irvine Ranch Water District

Kings County Area Public Transit Agency

Kings Waste & Recycling Authority

Lake County

Lakeside Fire Protection District\*

**\$125,000 (continued)**

Mendocino County

Morongo Basin Transit Authority dba Basin Transit

Nevada County

PRISM

Sacramento Area Sewer District

Sacramento First 5 Commission

San Mateo Consolidated Fire Department

Santa Barbara County

Self Insured Risk Management Authority

Siskiyou County

SLORTA JPA

Solano County

Tahoe Transportation District

Town of Colma

Tulare County

West San Gabriel WC JPA

Yuba County

**\$150,000**

City of Ridgecrest

**\$250,000**

Berkeley Unified School District

Central County Fire Department

City of Adelanto

City of Bell

City of Hanford

City of Hemet

City of Pico Rivera

College of the Law, San Francisco

Lake Elsinore Unified School District

Madera County

Monterey Bay Area Self Insurance Authority

Santa Barbara Metropolitan Transit District

Shasta County

\*Member of Public Agencies Self Insurance System (PASIS) - San Diego

# EXCESS WORKERS' COMPENSATION PROGRAM MEMBERS

Listed by Self Insured Retention

**\$300,000**

- City of Beaumont
- City of Lompoc
- City of Moreno Valley
- City of Napa
- City of San Clemente
- City of San Marcos\*
- Imperial County
- Kings County
- Mariposa County
- Merced County
- North County Fire Protection District, San Diego\*
- Placer County
- Rancho Santa Fe Fire Protection District\*
- San Miguel Consolidated Fire Protection District\*
- Santa Clara County Office of Education
- Sonoma County
- Tuolumne County

**\$350,000**

- Bay Area Housing Authority Risk Management Authority
- Campbell Union School District
- California Association for Park and Recreation Indemnity
- City of Daly City
- City of Redwood City
- City of Sausalito
- East Bay Regional Park District
- Monterey Salinas Transit
- Napa County
- Redondo Beach Unified School District
- San Luis Obispo County
- Santa Cruz Metro Transit District

**\$400,000**

- City of El Monte
- City of Rialto
- Monterey County
- Northern California Special Districts Ins. Auth'y

**\$500,000**

- California Fair Services Authority
- California Schools JPA
- City of Bakersfield\*\*
- City of Burlingame
- City of Concord
- City of Covina
- City of Escondido
- City of Fremont
- City of Hawthorne
- City of Hayward
- City of Millbrae
- City of Monterey\*\*
- City of Monterey Park
- City of National City
- City of Oceanside
- City of Santa Cruz\*\*
- City of Santa Rosa
- City of South San Francisco
- City of Stockton
- City of Sunnyvale
- City of Vallejo
- City of Westminster
- City of Whittier
- Fresno County
- Golden Empire Transit District
- Los Angeles County Development Authority
- Municipal Pooling Authority
- Northern CA Cities Self Insurance Fund
- Oakland Unified School District
- Pasadena USD
- San Joaquin County
- San Mateo County Schools Insurance Group
- Santa Cruz County
- Stanislaus County

\*Member of Public Agencies Self Insurance System (PASIS) - San Diego

\*\*Member of ACCEL

# EXCESS WORKERS' COMPENSATION PROGRAM MEMBERS

Listed by Self Insured Retention

**\$750,000**

- City of Baldwin Park
- City of Carson
- City of Chico
- City of Cupertino
- City of Downey
- City of Fairfield
- City of Gardena
- City of Manhattan Beach
- City of Modesto\*\*
- City of Mountain View\*\*
- City of Oakland
- City of Palo Alto\*\*
- City of Petaluma
- City of Redding
- City of Redondo Beach
- City of Richmond
- City of San Bruno
- City of Santa Barbara\*\*
- City of Santa Clara
- City of Simi Valley
- Contra Costa County
- Golden State Risk Management Authority
- Riverside Transit Agency
- Santa Clara County Central Fire Protection District
- Turlock Irrigation District

**\$1,000,000**

- City of Chula Vista
- City of Corona
- City of Fontana
- City of Garden Grove
- City of Huntington Beach
- City of Montebello
- City of Ontario\*\*
- City of Oxnard

**\$1,000,000 (continued)**

- City of Pomona
- City of Salinas\*\*
- City of San Bernardino
- City of San Buenaventura (Ventura)
- City of Santa Monica\*\*
- OC Sanitation District
- Omnitrans
- Yolo County Public Agency Risk Mgmt Ins. Auth'y

**\$2,000,000**

- Alpine County\*\*\*
- City of Anaheim\*\*
- City of Sacramento
- City of Torrance
- Colusa County\*\*\*
- Del Norte County\*\*\*
- Lassen County\*\*\*
- Modoc County\*\*\*
- Mono County\*\*\*
- Orange County Fire Authority
- Plumas County\*\*\*
- Riverside County
- San Benito County\*\*\*
- San Bernardino County
- San Diego County
- Sierra County\*\*\*
- Sutter County\*\*\*
- Tehama County\*\*\*
- Trinity County\*\*\*

**\$3,000,000**

- Alameda County
- Sacramento County

**\$5,000,000**

- Local Agency WC Excess JPA

\*\*Member of ACCEL

\*\*\*Member of Trindel Insurance Fund

# GENERAL LIABILITY 1

## PROGRAM MEMBERS

Listed by Self Insured Retention or Deductible Buy-Down

### \$10,000 Deductible Buy-Down

California Mental Health Services Authority  
 Capitol Area Development Authority  
 City of Carmel by the Sea  
 City of Lindsay  
 City of Rancho Cordova  
 Contra Costa County IHSS Public Authority  
 Del Norte IHSS Public Authority  
 Housing Authority of the County of Riverside  
 Imperial County IHSS Public Authority  
 Kern County IHSS Public Authority  
 Lake County  
 Monterey County Water Resource Agency  
 Riverside County IHSS Public Authority  
 Sacramento County Contracts  
 San Bernardino IHSS Public Authority  
 San Diego County IHSS Public Authority  
 Santa Clara County Library District JPA  
 Shasta IHSS Public Authority  
 Siskiyou County  
 Sutter IHSS Public Authority  
 Tuolumne County  
 Yuba County  
\$25,000  
 Council of San Benito County Governments  
 Marin County Transit District  
\$50,000  
 Los Angeles County Law Library  
 West San Gabriel Liability and Property JPA  
\$100,000  
 Amador County  
 Butte County  
 Calaveras County  
 Central Sierra Child Support Agency  
 City of Del Mar  
 City of Hanford  
 City of Imperial Beach  
 City of Lompoc

### \$100,000 (continued)

City of Los Alamitos  
 City of Ridgecrest  
 City of Solana Beach  
 City of South Pasadena  
 Huntington Beach Union High School District  
 Irvine Ranch Water District  
 Pasadena USD  
 San Benito County IHSS Public Authority  
 San Jose Unified School District  
 Solano Transportation Authority  
 Trindel Insurance Fund  
\$150,000  
 City of Napa  
 City of Santee  
 Mariposa County (IMCD \$250,000)  
\$200,000  
 Imperial County  
 Madera County  
 PRISM  
\$250,000  
 California Fair Services Authority  
 Central Region School Insurance Group  
 City of Beaumont  
 City of Belmont  
 City of Calexico  
 City of Carson  
 City of El Cajon  
 City of Elk Grove  
 City of Encinitas  
 City of Lancaster  
 City of National City  
 City of Santa Maria  
 City of Sausalito  
 Inyo County  
 Nevada County  
 Sacramento Area Flood Control Agency  
 San Mateo County Schools Insurance Group

IMCD - Individual Member Corridor Deductible

# GENERAL LIABILITY 1 PROGRAM MEMBERS

Listed by Self Insured Retention or Deductible

\$250,000 (continued)

Shasta County  
South Bay Area Schools Insurance Authority

\$300,000

City of Coronado  
City of Pico Rivera  
Humboldt County

\$350,000

Mendocino County

\$500,000

City of Adelanto  
City of Chula Vista  
City of Concord  
City of Covina  
City of Escondido  
City of Manhattan Beach  
City of Palmdale  
City of Redlands  
City of Redondo Beach  
City of Rialto  
City of Westminster  
East Bay Regional Park District  
Golden State Risk Mgmt Auth'y \*IMCD \$1,000,000  
Kings County  
Merced County  
Napa County  
San Bernardino Departments  
San Diego Unified School District  
San Luis Obispo County  
Solano County  
Tri-County Schools Insurance Group  
Tulare County

\$750,000

City of Baldwin Park  
City of Gardena

\$1,000,000

California Intergovernmental Risk Authority  
California Schools JPA  
City of Corona

\$1,000,000 (continued)

City of Fontana  
City of Oceanside  
City of Pomona  
City of San Buenaventura (Ventura)  
City of San Mateo (IMCD \$1,000,000)  
City of Simi Valley  
Fresno County  
Los Angeles County Office of Education  
Placer County  
Schools Excess Liability Fund  
Stanislaus County  
Yolo County Public Agency Risk Mgmt Ins. Auth'y

\$1,500,000

CAPRI

\$2,000,000

Alpine County\*  
City of Costa Mesa  
City of Garden Grove  
City of Hawthorne  
City of Thousand Oaks  
Colusa County\*  
Del Norte County\*  
Lassen County\*  
Modoc County\*  
Mono County\*  
Plumas County\*  
Public Entity Risk Management Authority  
Sacramento Area Sewer District  
San Benito County  
Santa Barbara County  
Sierra County\*  
Sonoma County  
Sutter County\*  
Tehama County  
Trinity County\*

\*Member of Trindel Insurance Fund

IMCD - Individual Member Corridor Deductible

# GENERAL LIABILITY 1

## OUT-OF-STATE PARTICIPANTS

### Various Self Insured Retentions

Arizona School Risk Retention Trust, INC. (AZ)

Boulder County (CO)

City of Elgin (IL)

City of Glendale (AZ)

City of Waukegan (IL)

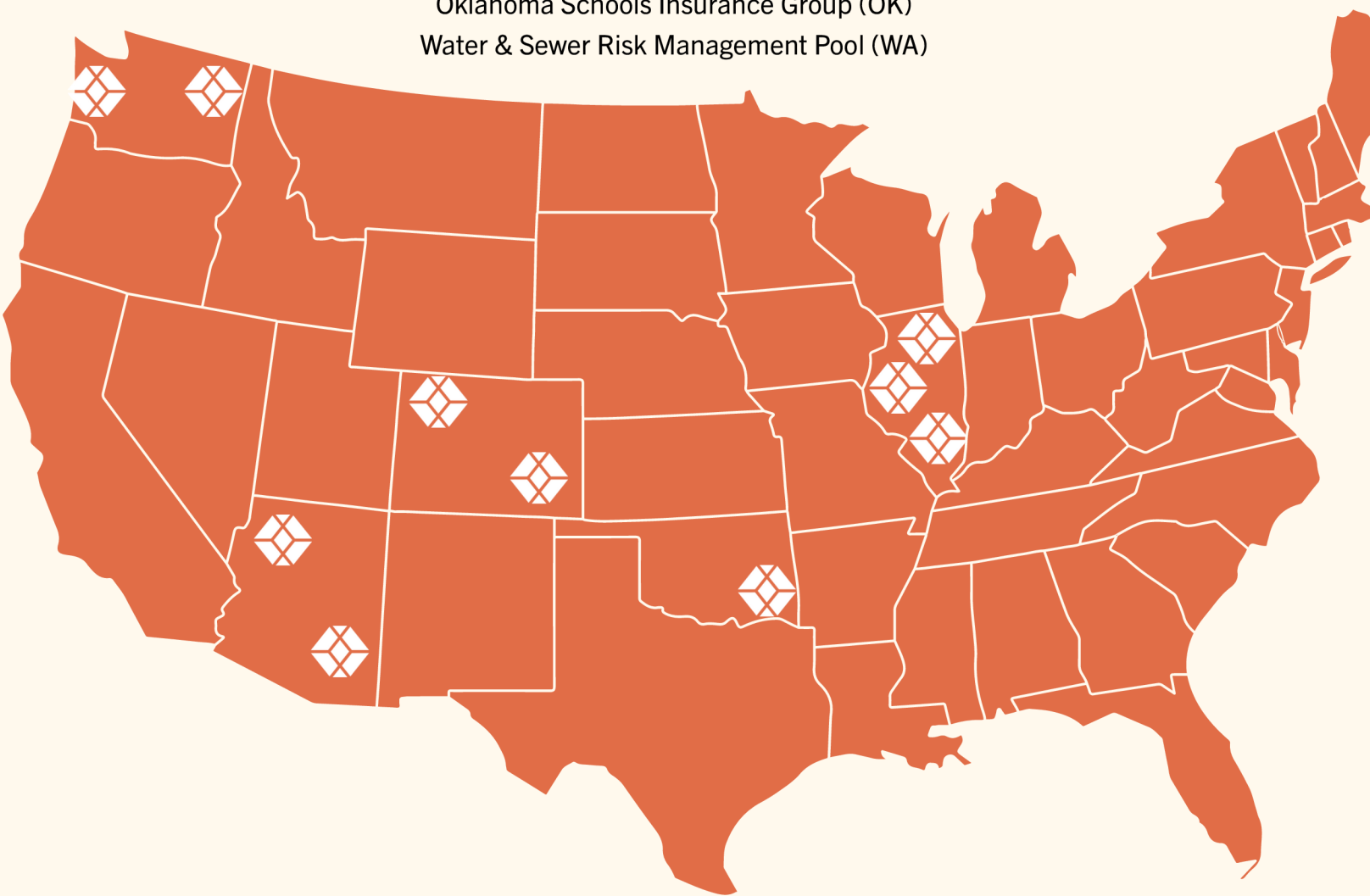
Cook County (IL)

Douglas County (CO)

Housing Authorities Risk Retention Program (WA)

Oklahoma Schools Insurance Group (OK)

Water & Sewer Risk Management Pool (WA)



# GENERAL LIABILITY 2 PROGRAM MEMBERS

Listed by Self Insured Retention

\$1,000,000

- Alameda County
- City of Compton
- City of Huntington Beach
- City of Montebello (IMCD \$500,000)
- City of Monterey Park (IMCD \$500,000)
- City of Oxnard
- City of Santa Clara
- City of Vallejo (IMCD \$1,000,000)
- Contra Costa County
- El Dorado County
- San Joaquin County
- Santa Cruz County
- Tulare County

\$2,000,000

- City of Glendale
- City of Hayward (IMCD \$250,000)
- City of Sacramento (IMCD \$2,000,000)
- Sacramento County
- Ventura County

\$2,500,000

- Monterey County (IMCD \$750,000)

\$3,000,000

- San Bernardino County (IMCD \$2,000,000)

\$5,000,000

- City of Oakland
- City of Pasadena (IMCD \$1,000,000)
- City of Redlands
- City of San Bernardino
- City of Stockton
- City of Torrance
- San Diego County

\$7,500,000

- City of San Diego
- Riverside County
- Santa Clara County

# PROPERTY PROGRAM MEMBERS

Listed by Deductible

**\$25,000**

Alpine County  
 Amador County  
 Butte County  
 Calaveras County  
 Central Sierra Child Support Agency  
 City of Adelanto  
 City of Bakersfield  
 City of Baldwin Park  
 City of Calexico  
 City of Carmel by the Sea  
 City of Chula Vista  
 City of Concord  
 City of Coronado  
 City of Covina  
 City of Del Mar  
 City of Elk Grove  
 City of Encinitas  
 City of Fountain Valley  
 City of Hawthorne  
 City of Hemet  
 City of Imperial Beach  
 City of Lemon Grove  
 City of Lindsay  
 City of Lompoc  
 City of Los Alamitos  
 City of Manhattan Beach  
 City of Montebello  
 City of Monterey Park  
 City of Napa  
 City of National City  
 City of Oceanside  
 City of Palmdale  
 City of Pico Rivera  
 City of Rancho Cordova

**\$25,000 (continued)**

City of Rialto  
 City of Ridgecrest  
 City of Santee  
 City of Sausalito  
 City of Solana Beach  
 City of South Pasadena  
 City of Vallejo  
 City of Vista  
 City of Westminster  
 Colusa County  
 Del Norte County  
 East Bay Regional Park District  
 El Dorado County  
 Golden State Risk Management Authority  
 Housing Authority of the County of Riverside  
 Humboldt County  
 Huntington Beach Union High School District  
 Imperial County  
 Inyo County  
 Kings County  
 Lake County  
 Lassen County  
 Madera County  
 Marin County Transit District  
 Mariposa County  
 Mendocino County  
 Merced County  
 Modoc County  
 Mono County  
 Mountain Communities Healthcare District  
 Napa County  
 Nevada County  
 Plumas County  
 PRISM

# PROPERTY PROGRAM MEMBERS

Listed by Deductible

\$25,000 (continued)

San Benito County  
 San Diego Housing Commission  
 Santa Clara County Vector Control District  
 Santa Cruz County  
 Shasta County  
 Sierra County  
 Siskiyou County  
 Sonoma County Employees' Retirement Association  
 Sutter County  
 Tehama County  
 Trinity County  
 Tuolumne County  
 Yuba County

\$50,000

Alameda County  
 Alameda Health System  
 California Intergovernmental Risk Authority  
 City of Escondido  
 City of Oakland  
 City of Oxnard  
 City of Redondo Beach  
 City of San Diego  
 Contra Costa County  
 Humboldt Transit Authority  
 Irvine Ranch Water District  
 Kern County  
 Monterey County  
 Pasadena USD  
 Placer County  
 Riverside County  
 Sacramento Area Sewer District  
 Sacramento County  
 San Diego County  
 San Diego Metropolitan Transit System

\$50,000 (continued)

San Joaquin County  
 San Luis Obispo County  
 Santa Clara County  
 Santa Clara County Library District JPA  
 Solano County  
 Sonoma County  
 Stanislaus County  
 Tulare County  
 Ventura County  
 West San Gabriel Liability and Property JPA  
 Yolo County Public Agency Risk Mgmt Ins. Auth'y

\$75,000

California Schools JPA

\$100,000

Central Region School Insurance Group  
 City of Modesto  
 City of San Bernardino  
 Fresno County  
 Kern County Hospital Authority  
 Monterey Peninsula Airport District  
 Pima County (AZ)  
 Port of Sacramento  
 San Bernardino County  
 Santa Barbara County

\$250,000

City of Stockton

# MEDICAL MALPRACTICE PROGRAM MEMBERS

Listed by Self Insured Retention

**\$25,000**

- Alameda County
- Alpine County
- Amador County
- Butte County
- Butte Schools Self-Funded Programs
- Calaveras County
- City of Anaheim
- City of Berkeley
- City of Fremont
- Colusa County
- Del Norte County
- El Dorado County
- Glenn County
- Humboldt County
- Imperial County
- Inyo County
- Kings County
- Lassen County
- Los Angeles USD Risk Mgmt Auth'y
- Madera County
- Marin County
- Mariposa County
- Mendocino County
- Merced County
- Modoc County
- Mono County
- Napa County
- Nevada County

**\$25,000 (continued)**

- Placer County
- Plumas County
- San Benito County
- San Diego Unified
- School District
- San Luis Obispo County
- Santa Barbara County
- Santa Cruz County
- Shasta County
- Sierra County
- Siskiyou County
- Solano County
- Sonoma County
- Stanislaus County
- Sutter County
- Tehama County
- Trinity County
- Tulare County
- Tuolumne County
- Yolo County
- Yuba County

**\$500,000**

- Santa Clara County

**\$1,000,000**

- Contra Costa County
- Fresno County
- San Joaquin County

**\$1,100,000**

- Riverside County

# PRISMHEALTH PROGRAM MEMBERS



Amador County  
Calaveras County  
California State University Risk Mgmt Auth'y  
CenCal Health  
City of Chico  
City of Clovis  
City of El Centro  
City of Huntington Beach  
City of Irvine  
City of Lompoc  
City of Madera  
City of Merced  
City of Modesto  
City of Oceanside  
City of Redding  
City of San Bernardino  
City of Santa Rosa  
City of Shafter  
City of Visalia  
City of Walnut Creek  
City of Watsonville  
City of Yuba City  
Del Norte County  
El Dorado County  
Golden State Risk Management Authority  
Imperial County  
Inland Empire Health Plan  
Lake County  
Lompoc Valley Medical Center  
Los Angeles County Development Authority  
Mendocino County  
Merced County  
Merced Irrigation District  
OC Sanitation District  
Orange County Transportation Authority  
Pajaro Valley Health Care District Hospital  
Corporation dba Watsonville Community Hospital  
San Bernardino Municipal Water Department  
San Diego Metropolitan Transit System  
San Luis Obispo County  
Santa Barbara County  
South Coast Air Quality Management District  
Special District Risk Management Authority  
Superior Court of California, County of Merced  
Superior Court of California, County of Santa Barbara  
Superior Court of California, County of Stanislaus  
Sutter County  
Tehama County  
Tuolumne County  
Turlock Irrigation District

# DENTAL PROGRAM MEMBERS



Alpine County  
 Amador County  
 Bay Area Air Quality Management District  
 Calaveras County  
 California Intergovernmental Risk Authority  
 California State Senate  
 California State University Risk Mgmt Auth'y  
 CenCal Health  
 Central Contra Costa Sanitary District  
 Central Sierra Child Support Agency  
 City of Alameda  
 City of Albany  
 City of American Canyon  
 City of Atwater  
 City of Belmont  
 City of Buena Park  
 City of Calabasas  
 City of Capitola  
 City of Carmel by the Sea  
 City of Chico  
 City of Citrus Heights  
 City of Clovis  
 City of Concord  
 City of Costa Mesa  
 City of Culver City  
 City of Cypress  
 City of Dixon  
 City of El Centro  
 City of Elk Grove  
 City of Fairfield  
 City of Foster City  
 City of Fremont  
 City of Galt  
 City of Goleta  
 City of Hayward  
 City of Hesperia  
 City of Huntington Beach  
 City of Ione  
 City of Irwindale  
 City of Lake Forest  
 City of Lemon Grove  
 City of Live Oak  
 City of Livermore  
 City of Loma Linda  
 City of Madera  
 City of Maywood  
 City of Menlo Park  
 City of Merced  
 City of Mill Valley  
 City of Mission Viejo  
 City of Murrieta  
 City of Napa  
 City of Needles  
 City of Norco  
 City of Oceanside  
 City of Oroville  
 City of Pacifica  
 City of Palo Alto  
 City of Paso Robles  
 City of Perris  
 City of Pinole  
 City of Pittsburg  
 City of Pleasanton  
 City of Port Hueneme  
 City of Rancho Cordova  
 City of Rancho Mirage  
 City of Rancho Santa Margarita  
 City of Redding  
 City of Richmond  
 City of Rohnert Park  
 City of Roseville  
 City of San Bernardino  
 City of San Jacinto  
 City of San Leandro  
 City of San Ramon  
 City of Santa Clara

# DENTAL PROGRAM MEMBERS

City of Santa Rosa	Monterey County Housing Authority
City of Solana Beach	Monterey Salinas Transit
City of South San Francisco	Morongo Basin Transit Authority dba Basin Transit
City of Stanton	Napa County
City of Stockton	Napa Sanitation District
City of Sunnyvale	Northern California Power Agency
City of Vacaville	OC Sanitation District
City of Vallejo	Office of Community Investment and Infrastructure
City of Visalia	Orange County Transportation Authority
City of Walnut Creek	Palo Verde Valley Health Care District Hospital
City of Watsonville	Placer County
City of West Covina	Placer County Water Agency
City of West Sacramento	Pleasant Hill Recreation and Park District
Coachella Valley Association of Governments	Plumas County
Colusa County	Port of Oakland
Del Norte County	PRISM
Dublin San Ramon Services District	Public Entity Risk Mgmt Auth'y Administration
El Dorado County	Rural County Representatives of California
Fairfield-Suisun Sewer District	Sacramento Area Sewer District
Glenn County	Sacramento-Yolo Mosquito & Vector Control District
Gold Coast Transit District	San Benito County
Golden State Risk Management Authority	San Bernardino Municipal Water Department
Great Basin Unified Air Pollution Control District	San Diego County Water Authority
Humboldt County	San Joaquin County
Inland Empire Health Plan	San Luis Obispo County
Inland Empire Utilities Agency	Santa Barbara County
Inyo County	Santa Clara County Housing Authority
Lake County	Santa Clara Valley Water District
Lassen County	Santa Cruz County
Mariposa County	Santa Cruz Metro Transit District
Mendocino County	Shasta County
Merced County	Sierra County
Merced Irrigation District	Siskiyou County
Midpeninsula Regional Open Space District	SLORTA JPA
Mono County	Solano County

# DENTAL PROGRAM MEMBERS



Sonoma Marin Area Rail Transit  
 Special District Risk Management Authority  
 Stanislaus County  
 Superior Court of California, County of Alameda  
 Superior Court of California, County of Alpine  
 Superior Court of California, County of Amador  
 Superior Court of California, County of Butte  
 Superior Court of California, County of Calaveras  
 Superior Court of California, County of Colusa  
 Superior Court of California, County of Contra Costa  
 Superior Court of California, County of Del Norte  
 Superior Court of California, County of El Dorado  
 Superior Court of California, County of Lake  
 Superior Court of California, County of Lassen  
 Superior Court of California, County of Merced  
 Superior Court of California, County of Orange  
 Superior Court of California, County of Placer  
 Superior Court of California, County of San Benito  
 Superior Court of California, County of San Luis Obispo  
 Superior Court of California, County of Santa Barbara  
 Superior Court of California, County of Shasta  
 Superior Court of California, County of Sonoma  
 Superior Court of California, County of Stanislaus  
 Superior Court of California, County of Trinity  
 Superior Court of California, County of Tuolumne  
 Superior Court of California, County of Yolo  
 Superior Court of California, County of Yuba  
 Sutter County  
 Tehama County  
 Town of Apple Valley  
 Town of Yountville  
 Transportation Corridor Agencies  
 Trindel Insurance Fund  
 Trinity County  
 Tuolumne County  
 Turlock Irrigation District  
 Union Sanitary District  
 Yolo County  
 Yuba County



**PRISM**



# PRISM



## About Us

PRISM was formed as a Joint Powers Authority (JPA) in 1979, pursuant to Article 1, Chapter 5, Division 7, Title 1, of the California Government Code (Section 6500 et seq.).

Dedicated to the control of losses and cost effective risk management solutions, PRISM is a recognized leader and pioneer in the pooling and risk management community in California and nationwide.

To learn more, visit our website at [www.prismrisk.gov](http://www.prismrisk.gov).

## Contact Us



Questions?  
[tcorona@prismrisk.gov](mailto:tcorona@prismrisk.gov)



Phone  
916.850.7300



Office  
75 Iron Point Circle, Suite 200  
Folsom, CA 95630