

# Identifying Workplace Safety Hazards



## Fall Hazards

- Not wearing fall protection
- Not wearing fall protection properly
- No guardrails
- Improper guardrails
- No floor coverings
- Improper scaffolding
- Unprotected trenches, pits
- Unsafe work practices
- Improper use of ladders



## Electrical Hazards

- Energized unprotected circuits
- Cuts, tears, or other damage to outer sheath of conductors
- Not having adequate work space around electrical equipment
- Defective electrical equipment
- Improper guarding of electrical equipment
- Operating electrical equipment in wet conditions, inside or outside with out a Ground Fault Circuit Interrupter (GFCI)
- Electrical equipment not grounded
- Unsafe work practices



## Construction Hazards

- Unprotected excavations, pits, vaults
- Excavations not properly shored
- Unprotected steel protrusions
- Unprotected floor openings
- Tools/machinery not properly guarded
- No guardrails; improper guardrails
- Missing or improper back guard on industrial trucks (forklift, high-reach truck)
- Improper use of ladders
- Poor housekeeping
- Unsafe work practices
- No Personal Protective Equipment (PPE); improper PPE



## Facility Hazards

- Unguarded tools/machinery
- Blocked fire exits
- Flammable and combustible liquids and gases stored improperly
- Blocked emergency eye wash and shower equipment
- Chemicals stored improperly
- Fire extinguishers not inspected or properly maintained
- Work at elevations or in pits not protected; no guardrails, nets, or fall protection
- First aid kits not approved or properly maintained



## Virtual Workplace Inspection



# No Fall Protection



# No Fall Protection; Improper Guardrails



## Scaffolding Missing Guardrails; Improper Work Platform



## Standing On Saw Horse



## Standing On Single Plank <20"



## Top Rail Missing On Guardrails

Window Opening



# Improper Use Of Step Ladder



# Ladder Not Secured To Wall

**Single Employee  
Performing Task**



## Improper Use Of Step Ladder



## Improper Ladder Footing Support



## No Fall Protection Or Guardrails



## No Guardrails On Scaffolding



## Operator Outside Guardrails; No Fall Protection



## Ladder Not Secured To Wall

**Single Employee  
Performing Task**



## Operator Outside Guard Rails; No Fall Protection



**6' Rip Stop Lanyard  
Connected to Body Harness**



**Aerial Device approximately  
12' Above the Ground**



## No Fall Protection Or Guardrails



## Improper Ladder Footing Support Flexible Electrical Cords-Trip Hazard



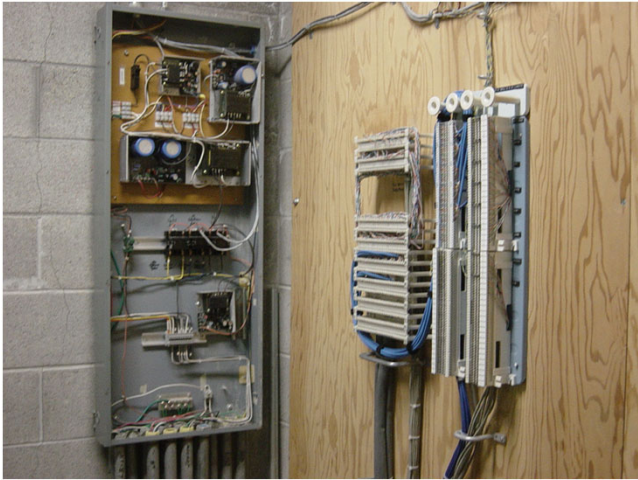
## Flexible Cord Outer Sheath Damaged Wrapped In Tape



# Metal Ladder Used In Proximity To Energized Electrical Equipment



# Exposed Energized Parts



# Improper Wiring Installation



# Unprotected Excavation; No Shoring!



# Unprotected Open Vault



# Improper Shoring!



# Unprotected Steel Reinforcing Bar (Rebar) Protrusions



# Saw Missing Guard



# Unprotected Floor Opening



# Fire Extinguisher Not Inspected No Inspection Record



## Unprotected Pit; Poor Housekeeping



## Steel Rebar Lying on Flexible Electrical Cord



## Guard Removed From Hand Grinder



## Air Compressor Hose-Trip and Fall Hazard



# Unprotected Steel Rebar Protrusions



# Ramp Missing Guardrail



# Operator Not Wearing Seat Belt With ROPS Installed

**Seat Belt Laying On Tractor's  
Back Deck Lodged Under  
Control Lever**



**Tractor Has Roll Over Protection  
Structure (ROPS) Installed**



# Poor Housekeeping



## Sling Shows Excessive Wear; Rotten Stitching; Tag Ripping Off



## Sling Shows Excessive Wear; Broken Fibers



## Guard Removed From Hand Grinder



## Exposure Guards And Work Rests Improperly Adjusted



## Oxygen-Acetylene Hoses Missing Backflow Valves



 **PRISM**  
Public Risk Innovation,  
Solutions, and Management

---

## Compressed Air Safety Nozzle Blocked With Tape



 **PRISM**  
Public Risk Innovation,  
Solutions, and Management

---

## Oxygen and Acetylene Gas Cylinders Stored Together



 **PRISM**  
Public Risk Innovation,  
Solutions, and Management

---

## Unknown Liquid Improperly Stored



 **PRISM**  
Public Risk Innovation,  
Solutions, and Management

---

## Poor Housekeeping; Combustible Waste



## Saw Missing Guard



## Boom Box Not Protected By GFCI



## Inadequate Shade Area



# Operator Not Wearing Seat Belt ROPS Installed On Forklift



# Mezzanine Missing Guardrails



# Exposure Guards And Work Rests Improperly Adjusted



 **PRISM**  
Public Risk Innovation,  
Solutions, and Management

# Unprotected Pit



 **PRISM**  
Public Risk Innovation,  
Solutions, and Management

## Eye Wash Access Blocked



 **PRISM**  
Public Risk Innovation,  
Solutions, and Management

## Pallet Jack Leaking Hydraulic Fluid



 **PRISM**  
Public Risk Innovation,  
Solutions, and Management

## Improperly Stored Flammable And Combustible Liquids



 **PRISM**  
Public Risk Innovation,  
Solutions, and Management

## OTC Drugs In First Aid Kit; Missing Dr.'s Approval Documentation

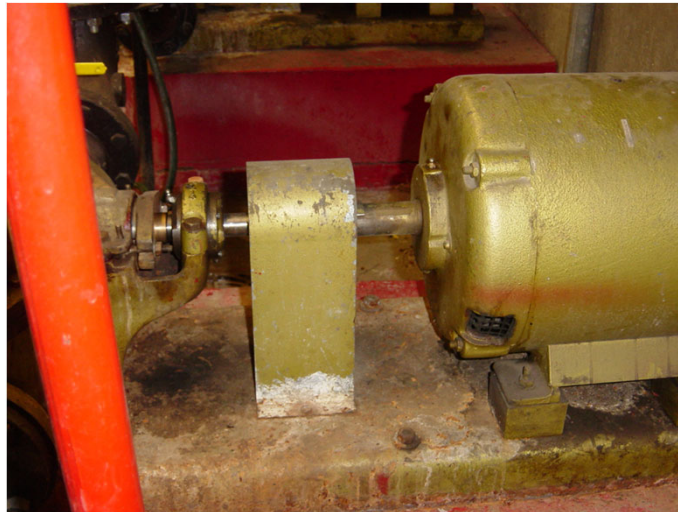


 **PRISM**  
Public Risk Innovation,  
Solutions, and Management

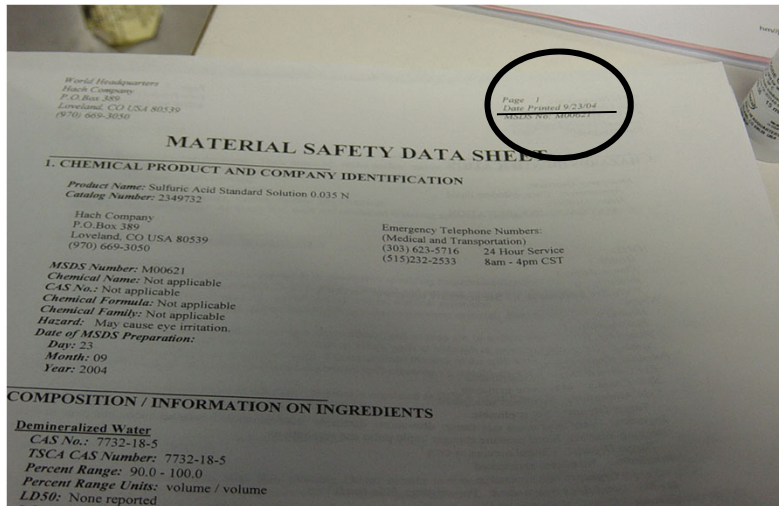
## Defective Brakes On Rolling Ladder



## Rotating Shaft Not Properly Guarded



# Safety Data Sheet (SDS) Out Dated



# Fire Exit Blocked

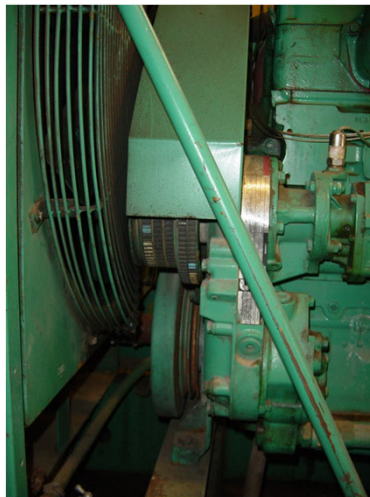


## Improper Guardrails Around Pit



 **PRISM**  
Public Risk Innovation,  
Solutions, and Management

## Inadequate Guard On Flywheels And Pulleys



 **PRISM**  
Public Risk Innovation,  
Solutions, and Management

# Employee Exposure to Non-Ionizing Radiation

